

Ecologo-Histophysiological and Experimental Researches on Mechanisms of the Neuroendocrine Regulation of Fish Reproduction

Garlov PE*

Federal State Budgetary Educational Institution of Higher Education "Saint-Petersburg State Agrarian University", Russia

***Corresponding Author:** Garlov PE, Federal State Budgetary Educational Institution of Higher Education "Saint-Petersburg State Agrarian University", Russia.

Received: December 07, 2022

Published: January 29, 2022

© All rights are reserved by

Garlov PE.

Introduction

The participation of the preoptic post neurohypophysial neurosecretory system in fish breeding was shown by histomorphological, immunohistochemical and electronic microscopical researches. The activation of discharge of nonapeptide neurohormones into blood circulation from posterior neurohypophysis at the beginning of spawning, with the following decrease of functional activity of system after it are revealed in every lumpsum (simultaneous) spawning fishes independently of its season (for example: *Acipenser*, *Lota*, *Oncorhynchus*). The similar reaction of neurosecretory system is observed morphologically also under the conditions of experimental stress - the containing of the adult acipenseridae fish in hypertonic medium. The diphasic reaction of neurosecretory system conforming to stages of an alarm and a resistance of stress, is considered to be the reflection of participation of neurosecretory system in protective-adaptive reactions of an organism to a physiological stress arising at breeding period of lumpsum spawning polycyclic fishes. At monocyclic species at once after spawning there becomes the blockage of function of releasing of neurohormones from posterior neurohypophysis corresponding to supernatural inhibition of system at distress. The functional role of nonapeptide neurohormones in breeding and the possibility of constructive usage of representation about the spawning as a physiological stress are discussed on the basis of analysis of morpho-functional mechanisms of participation of neurosecretory system in this process.

- By means of ecologo-histophysiological and experimental researches executed by the pathway of a direction of the professor N.L. Gerbil'sky's school [19], the participation of hypothalamic preoptic-postneurohypophysial neurosecretory system (PNS) of fish in realization of all stages of breeding, irrespective its season, is established [10,13,40]. With application quantitative histomorphological and cytochemical methods of procedures, including cytospectrophotometry,

immunocytochemistry and ultracytochemistry the dynamics in changes of functional activity of all departments of PNS is investigated during spawning at all of different-seasonal-breeding species of

- Acipenseridae, Salmonidae and Gadidae:** The Russian sturgeon (*Acipenser gueldenstaedtii* Brandt), pink (humpback) salmon (*Oncorhynchus gorbuscha* Walbaum) and burbot (*Lota lota* Linne) (Figure 1).

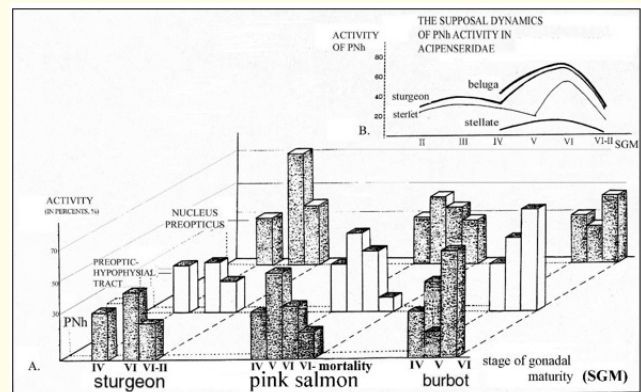


Figure 1: Dynamics of changes of functional activity of various departments of PNS in sturgeon, pink salmon and burbot at the process of spawning by data of the quantitative morphometry at levels of light and electron microscopy (after: Garlov, 2001). For comparison the data received in further works and in other species of the Acipenserid fishes are given (B). On a vertical - relative degree of functional activity. PNh: Posterior Neurohypophysis; PHT: Preoptic-Hypophysial Neurosecretory Tract; NPO: Nucleus Preopticus. On a horizontal - stages of gonadal maturity (SGM). The Roman figures under histogram designate stages of gonadal maturity: IV - before spawning, V - at the beginning of spawning, VI - soon after spawning, VI-II - some later (about a month) after spawning, VI-DEATH - in a pink-salmon, before destruction after spawning.

- All of the basic phylums of PNS constitution are submitted also at these kinds of fish [37] (Figure 2).

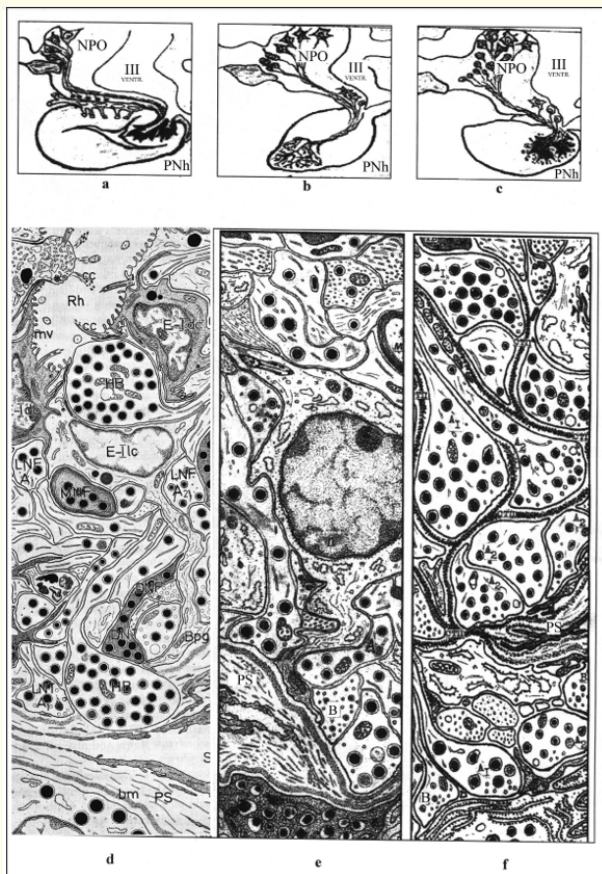


Figure 2: A scheme of the main features of a structure of PNS at the investigated kinds of the Chondrosteen and Teleosteen fishes (a - species *Acipenser*, b - species *Oncorhynchus*, c - species *Lota*), conforming to a level of their taxons position.

- Ultrastructural organization of PNh, schemes:** d - sturgeon, e - pink-salmon, f - burbot [fragments, after 13]. Along side with axo-vascular neurosecretory contacts expressed at all of kinds, at the sturgeon are expressed axo-ventricular, and at the burbot - axo-adenar neurosecretory contacts.
- Conditional notations:** A₁, A₂, B - species (forms) of neurosecretory fibers, light neurosecretory fibers (LNF), dark neurosecretory fibers (DNF) myelinated neurosecretory fibers (MNF), its' swellings and neurosecretory terminals (NT), bm - basal membrane of pericapillary space, mv - microvilly, cc -

cinocillias, Rh - cavity of recessus hypophyseus of the III ventriculi, Bpg - basement protrusion of glial cell (pituicyte), NPO - nucleus preopticus, P - pituicyte, PS - pericapillary space of sinusoidal capillary, PNh - posterior neurohypophysis, S- sinusoid capillary, E - ependimal cells (tanicytes) in *Acipenser*, light cell (lc) and dark cell (dc), HB - Herring body.

The diphasic reaction of PNS, conforming to alarm and resistance stages of stress, is established at them in spawning process which is most brightly expressed in posterior neurohypophysis (PNh) (Figure 3 a-d).

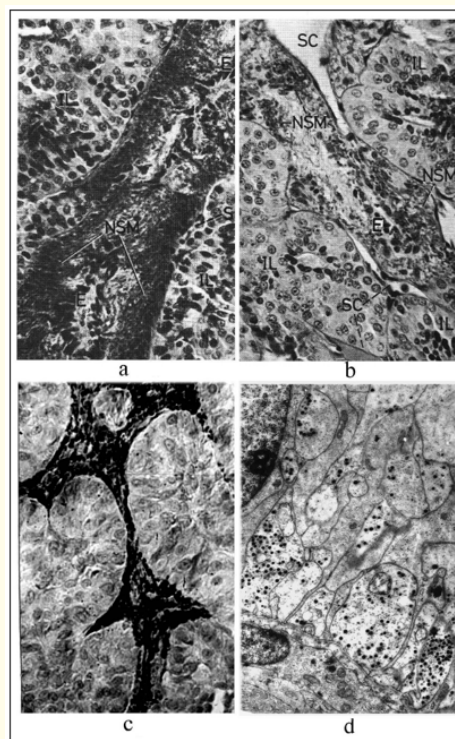


Figure 3: after: Polenov e.a., 1976). A preparates of state of PNh of sturgeon (a, b, d) and pink salmon (c) at various stages of spawning. A light microscopy (a, b): colouring paraldehyde - phuchsyn after Homori-Gabe and azan method after Heidengaine. The immunohistochemical reaction (c) to vasotocin (reaction of revealing of the unmarked antibodies after Sternberger and Joseph). An electronic microscopy (d): glutaraldehyde after Sabatini with Osmium tetroxide after Caulfield and having imbedded in Epon-812, mainly.

At springly-breeding females of sturgeon it is expressed by an activation of release of the nonapeptide neurohormones (NpNh) from PNh into general blood circulation soon after spawning and by the following subsequent decrease of PNS activity up to pre-spawning level (Figure 1A) [40].

- **At winterly-spawning burbot the consecutive reaction of PNS is established:** 1) at the beginning of spawning there is an activation of NpNh release from PNh in range of the so-called: "axo-adenar" neurosecretory contacts [42] with simultaneous decrease of neurosecretory activity both in Nucleus praeopticus hypothalamus and neurosecretory terminals of their axons in PNh in range of "axo-vasal" neurosecretory contacts and 2) just after spawning the bright activation already of all departments of PNS occurs. These two consecutive paths of the extrusion of NpNh ("trans-adenohypophysial and para-adenohypophysial") are characteristic for stress reaction also, that may be an optimal natural model for the analysis of this state [18].

At monocyclic autumnly-spawning pink salmon a bright activation of all departments PNS is revealed at the beginning of spawning, particularly in a state of the mass release of NpNh from PNh. The following decrease of the activity of all departments PNS occurs just after spawning, the functional blockade of PNh, particularly blocking the extrusion of NpNh, growing to the death, to the moment, that is proved first of all. Thus, by a quantitative electronic microscopical evaluation of a degree of functional activity of neurosecretory terminals in PNh it is established, that such a blockage descends as a result of infringement of their extrusional cycle, as against known for polycyclic fishes [18] (Figure 3c).

These researches were advanced in many subsequent works. So, the expressed activation of various departments PNS, showing in exhausting all of its departments from a neurosecretory stuff, activation of neuroglial elements and hyperemia of nucleus preopticus and PNh ranges, is established to the present time at many kinds of teleostei with lumpsum spawning, but: "at breeding season", or "during breeding" as a whole, without the count of stages of gonadal maturity [33]. For example, it is described the activation of neurosecretory cells of nucleus preopticus (pars magnocellularis), or PNh at springly-spawning Cyprinidae, Clupeidae and Gobiidae, e.g.: wild carp (*Cyprinus carpio* L.), goldfish (*Carassius auratus* L.),

toad goby (*Mesogobius batrachocephalus* Pallas), mud carp (*Cirrhinus mrigala* L.) [23,26,29,40]; autumnly-spawning polycyclic Salmonidae: Atlantic salmon (*Salmo salar* L.), kundscha (*Salvelinus leucomaenus pluvius* (Hilgendorf) and rainbow trout (*Salmo irideus* L.) [2,3,22,51]; sea tropical fishes: barb (*Puntius sarana* Ham.), Indian carp (*Labeo calbasu* Ham.), mud eel (*Amphipnous cuchia* Ham.), gilthead bream (*Sparus auratus* L.) [45,46,52], and also Dipnoi: Indian featherback (*Notopterus chitala* Ham.) [44]. Besides and in earlier works it was repeatedly specified a possible activation of various departments PNS at a breeding period of some viviparous forms, for example representatives Chondrichthyes: small-spotted dogfish (*Scyliorhinus canicula* L.), thorny skate (*Raja radiata* Don.) [26,27] and Osteichthyes: killifish (*Fundulus heteroclitus* L.) and viviparus blenny (*Zoarces viviparus* L.) [32,50]. The precise enough pictures of release of neurohormones from PNh into blood stream at the beginning of spawning are established by electronic microscopy only at goldfish [23] and, to a lesser degree, at wild carp [42]. The data on functional blockage of PNh after breeding, well-coordinated to our results at pink salmon, are received at capelin males (*Mallotus villosus* Muller.), which majority perishes in this season [30]. And, at last, preliminary results of the further development of our works on trade kinds of Acipenseridae fish have shown, that of a various degree the activation of PNh at the spawning season descends practically at all investigated species, for example beluga (*Huso huso* L.), starred (stellate) sturgeon (*A. stellatus* Pallas) and sterlet (*A. ruthenus* L.) (Figure 1B).

So, at spawning process in many fishes, irrespective of a season of a breeding, the activation of PNS, showing as exhausting from a neurosecretory stuff, takes place. It is accompanied by an activation of neuroglial cells and hyperemia of all departments of this system, but only at kinds with precisely expressed lumpsum spawning, as, for example, at investigated there Russian sturgeon, burbot, pink salmon [13]. Thus dynamics of functional activity fluctuation of neurosecretory cells in dorsal, mostly differentiated magnocellular part of a praeoptic nucleus (Nucleus Preopticus pars magnocellularis), is similar almost at all investigated species of fish (Figure 1A). Before spawning (the so-called in fish industry: IV stage of gonadal maturity - SGM) the neurosecretory cells are already in a rather awake functional state, and at the beginning of spawning (V SGM) there is intensifying of synthesis of neurosecretory products and their transport from pericaryons into axons. After spawning and later (VI and VII-II SGM) the gradual decrease of activity of these processes up to pre-spawning level is observed [18,40].

We assume, that NpNh firstly participate in initiation of spawning behaviour, founding on these data and also on that they invoke “spawning reflex” in fishes [5,33,34]. The initiation of spawning behaviour before breeding in fishes is provided with the removing of NpNh, mainly of arginin-vasotocin (AVT) into cerebral-spinal fluid (“liquor”) of a III-rd cerebral cavity, where they combined with gonadoliberin (LH-RH), render the neurotropic effect upon the behavioural centers of central nerve system (CNS), apparently, in septal, hyppocampal and amigdal ranges [13,24,33]. NpNh are discharged from neurosecretory cells of a praeoptic nucleus in the range of dendro-ventricular and somato-ventricular neurosecretory contacts, and from neurosecretory terminals in the range of axo-ventricular neurosecretory contacts of PNh and also of the homologue of eminencia mediana of hypothalamus in Chondrichthyes, Crossopterygii, Chondrostei, Holostei, Dipnoi [10,35]. In Teleosteen fishes NpNh can penetrate also into liquor through intercellular clefts from range of axo-vasal contacts in PNh [18]. These pathes of removing of NpNh are expressed morphologically in mass exhausting of neurosecretory cells, in particular in a reduction of the special forms of mass accumulation of neurosecretory products specialized for realization of a breeding, e.g., from droplets of neurosecrete and Herring bodies in different departments of PNS [13,18,36] (Figure 2d,3). At the majority of fish the spawning behaviour is kept almost up to the end of breeding, to what apparently is partly connected both initial and subsequent activations of PNS [20,31,54].

It is important, that the development (and conservation) of spawning dress also is biologically interconnected and synchronic with spawning behaviour by means of the stimulating influence of NpNh on function of the melanotropocytes in an intermediate lobe of the adenohypophysis (“mesoadenohypophysis”), with which PNh compounds a neurointermediate complex of a pituitary body (Figure 2, 3).

Morphologically such a participation is expressed most brightly in PNh of burbot at the beginning and just after spawning (V, VI SGM) as a progressive evacuation of NpNh from neurosecretory terminals in the range of axo-adenar neurosecretory contacts (Figure 1A). The leading role in this process, probably, also is carried out by vasotocin, as a synergist of corticoliberin (CRH), stimulating the release of the hormones of opioidal series at stress, in particular, adrenocorticotropic (ACTH) and melanocyte-stimulating (α -MSH) hormones, i.e., invoking a corticoliberin-like effect as a whole [6,7].

The activation of PNS is expressed maximum at the beginning of spawning (Figure 1A), as at the moment of an ovulation and sperm release, in connection with the requirement of NpNh, stimulating contraction of smooth muscle elements in gonads [18,32,33]. The leading role of isotocin (IT) is shown in these processes, having of 10-rates greater the uterotonic activity, than of vasotocin [33,34]. We assume, that the main target of NpNh action at ovulation are the thecal cells of follicles of an ovary (Figure 4), in which all attributes of smooth-muscle elements (3 forms of myofilaments, sarcoplasmic reticulum, dense bodies on a plasmalemma) are brightly expressed at acipenserid fishes [18,40].

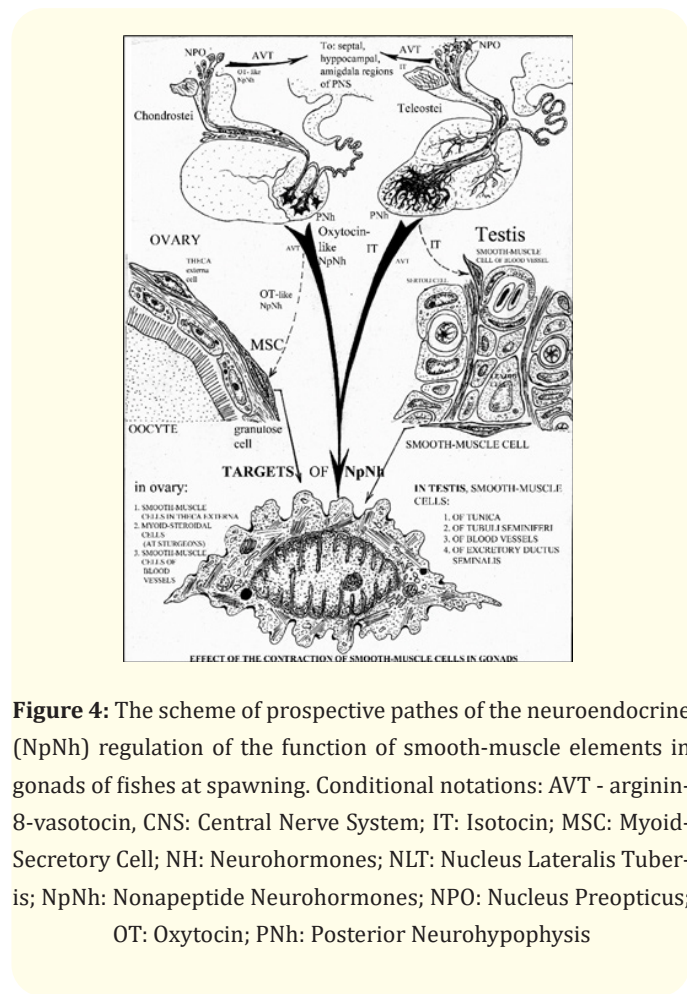


Figure 4: The scheme of prospective paths of the neuroendocrine (NpNh) regulation of the function of smooth-muscle elements in gonads of fishes at spawning. Conditional notations: AVT - arginin-8-vasotocin, CNS: Central Nervous System; IT: Isotocin; MSC: Myoid-Secretory Cell; NH: Neurohormones; NLT: Nucleus Lateralis Tuberosus; NpNh: Nonapeptide Neurohormones; NPO: Nucleus Preopticus; OT: Oxytocin; PNh: Posterior Neurohypophysis

These cells are myoid-steroidproducing elements, apparently, as a key enzyme of a steroidogenesis - 3β -hydroxysteroid dehydrogenase (3β -HSD) is revealed in their cytoplasm clearly by an ultra immuno cytochemical method, though the main structural

attributes of a steroidogenesis (smooth cytoplasmic reticulum, mitochondria with tubular-vesicular crists, lipid drops) are expressed at them rather poorly [16].

In spermary (testis) of fish such, but already multiple targets of NpNh action are smooth-muscle elements of seminal channels, sperm ducts, tunica and of large vessels (Figure 4). All these elements are in a state of a synchronic activation at the moment of ovulation and sperm release at the beginning of spawning [13,16]. The stimulation of both of these processes on the part of a hypothalamus is carried out by neurohormonal integration (by the complex of gonadoliberines and NpNh, particularly) and by two pathways (“trans- and para-adenohypophysial pathways” [18,35]. The leading among them in sperm release is the para-adenohypophysial pathway of direct stimulating influence of NpNh of oxytocin series upon a spermary [4,13,53] (Figure 4).

Taking into account a progressive hydrops of muscles during migration and breeding, especially at polycyclic of the salmons, meanwhile it is not less important also the participation of NpNh in maintenance of water-salt balance of an organism [2,25,47].

And finally, at spawning process and especially after it, NpNh participate in realizing of the protective-adaptive reactions of an organism to a physiological stress, which comes during lumpsum spawning at many species especially at salmonid fishes, on our representation [10,13,18]. The beginning of an activation of PNS at spawning can be considered, on this plan, first of all as the main parameter of a primary stressful effect [4,6,7,53].

For checking of such a hypothesis about participation PNS in protective-adaptive reactions of an organism to a physiological stress we carried out a comparative analysis of morpho-functional mechanisms of an activation of PNS during spawning and under the experimental stress. The latter was rather adequate for through passage (anadromical) fishes, caused by contents of the adult sturgeons and stellates in hypertonic solution of cooking salt at 17, 22 and 32 ‰ salinity [10,38]. The similar activation of PNS, expressed in mass release of NpNh into a blood stream in both situations is established (Figure 5 A, B).

However the level in the activation of structures and ultrastructures of PNh in experiments was expressed more brightly, and even

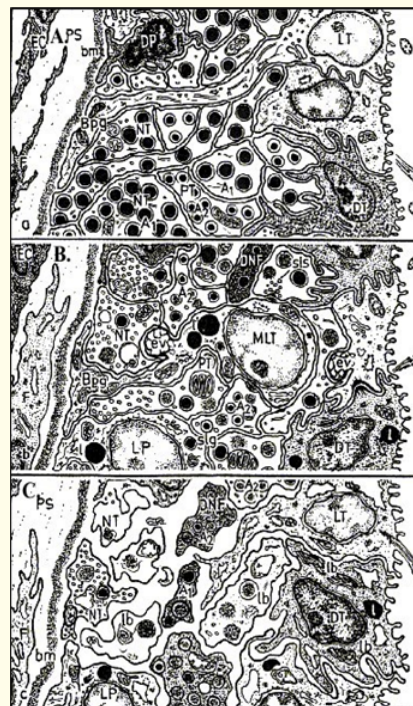


Figure 5: The scheme of the basic changes of ultrastructures of PNh in sturgeon at spawning season and after the contents in salt solution by concentration 32 ‰ (after: Polenov, Garlov, 1974).

pathological changes of ultrastructures, especially in neurosecretory terminals are established at the maximal treatment (32 ‰) (Figure 5C). Thus it has confirmed a well-known conclusion about direct dependence a degree of a PNS activation on intensity and duration of treatment [18,25,38]. Therefore the activation of PNS during spawning at the investigated species we also consider as the result of a natural physiological stress and approximately estimate the degree of its manifestation, as average of a sharp stress [4,53]. It is supposed, that plenties of NpNh at a stress reduce a degree of functional activity of secretory glands - NpNh targets after their hyperfunction, providing water-salt and metabolic homeostasis of an organism and, thus, preventing “to intrinsic combustion of an organism” [18,40].

The data on decreases of the functional activity of an internal tissue and so the contents of corticosteroids in blood stream after spawning at sturgeon in comparison with pre-spawning state also will be well coordinated to it (Barannikova, 1975). The activity of

the thyroid gland also is reduced after spawning at the sturgeon females [3,40].

The retaining of metabolic equilibrium of an organism at this period can be provided substantially by a bright antigonadotropic effect of the NpNh action [13,15,17]. This effect is probably realized by inhibition of the gonadoliberin secretion and also by stimulation of the ACTH secretion (synergy with CRH, particularly), direct influence of NpNh upon endocrine and generative functions of gonads [16,49].

Moreover, by the prolonged comparative tests of the action of preparations of the isolated anterior pituitary lobe, extracts of a whole pituitary body and also an isolated posterior pituitary lobe upon the process of sexual maturity of the sturgeon and stellate breeders it was shown, that the large doses of NpNh disturb the process of an ovulation, and their highly increased and super limited doses invoke an especially expressed antigonadotropic effect [13,15,17]. As it was shown by a data of the hystophysiological analysis, the long delay of an ovulation and resorption of sexual products in low-salinity water an average to 5-7‰ (the so-called "critical salinity") also is the effect of the slightly increased contents of NpNh in blood of the acipenserid fishes [12]. Moreover, it was established by a laboratory experiments on mass trade object - *Rutilus rutilus volgensis* (L.), that NpNh really intensify the resistibility of an organism to such a chronic slight stress [17].

On the contrary, the blockage of the PNH function after spawning at monocyclic species of fish, apparently corresponds to a state of protective inhibition or "shock" in conditions of a super strong stress (distress). A well-known physiological state of hyperadrenocorticism, educing at the spawning process in monocyclic of the salmons of a kind *Oncorhynchus* [3,6,47], probably, also is the cause of such a blockage of the NpNh discharge [18].

It is supposed, that in a basis of desintegration of neuroendocrine mutual relations the infringement of mechanisms of a self-regulation in hypothalamo-hypophysial-adrenocortical axis plays the main role [6,7,47]. Thus the consecutive disfunctions of PNS and deenergizing of NpNh functions, as a result, play especially important, probably initiation role in an acceleration of processes of aging of an organism and fast destruction of fishes, i.e. in realization of monocyclia - the major specific adaptation of a kind *Oncorhynchus* [13,18].

The character of participation of NpNh in protective-adaptive reactions of an organism to a stress at spawning is determined, apparently, by a coordination of mutual relation of a secretory cycle (of pericarions of neurosecretory cells in praeoptic nucleus) and of an extrusive cycle (of neurosecretory terminals in PNH), which is carried out by a principle "coordination - dissociation" and has an adaptive value accordingly - on the organismal, or (at monocyclic of kinds) on populational-specific level [13]. The possible pathes of NpNh influence and functional role of PNS in realizing of breeding process are given on the scheme (Figure 6).

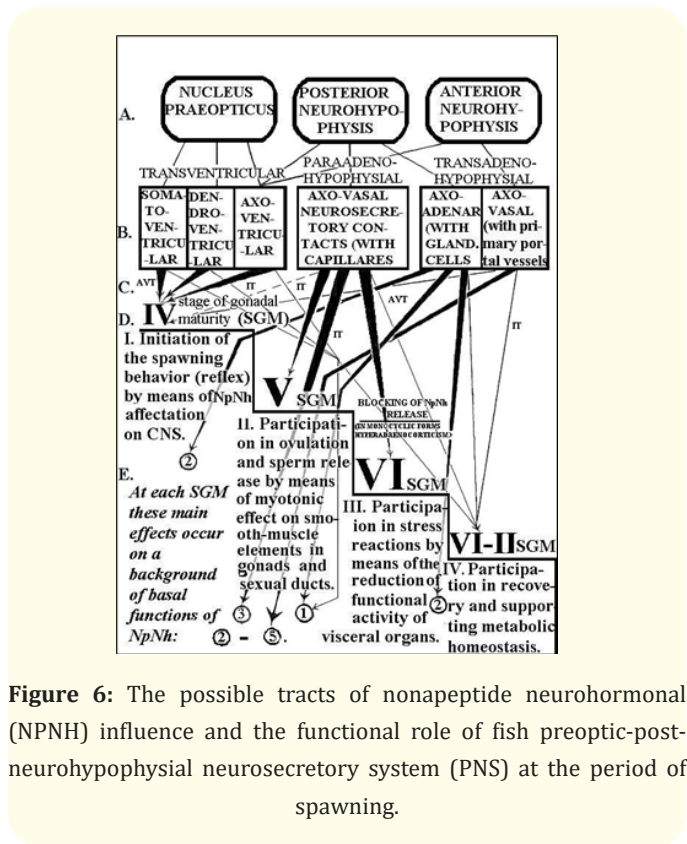


Figure 6: The possible tracts of nonapeptide neurohormonal (NPNH) influence and the functional role of fish preoptic-post-neurohypophysial neurosecretory system (PNS) at the period of spawning.

Indications of structural and functional levels of NpNh release and effects (A - F): A - pathways of NpNh influence. B - forms of neurosecretory contacts (structural basis of "A"). C - the main functional significance of NpNh at every stage of gonadal maturity. (From IV till VI-II of SGM); so are marked ("↓") the common tracts of NpNh release; so are marked: ("▼") the main tracts of NpNh release, mostly expressed at the definite stage of gonadal maturity. D - the author's explanation of the guessed main and basal functional roles of NpNh in spawning at every SGM.

E - the prolonged effects of NpNh at different SGM; so are marked: ("†"). The basal functions and the main mechanisms of NpNh, common to the majority of fish species (in circles: 1-5): the development of spawning and paternal behavior by means of the affectation on central nerve system (septum, hippocampus, amigdala, particularly). Amplification of GnRH, steroid and sexual hormonal effects. The combined influence of their collaboration.

The becoming, development and conservation of conjugal staining by means of the affecting to melanotropocytes, accounting colocalization and synergism of NpNh with CRH and collaboration with monoamines. Regulation of the water-mineral equilibrium by means of the affecting to kidney, tunica of vesica urinaria, Na-excreting cells in gills epithelium. Synergism of PNS (NpNh) with Caudal NS (Urotensins), mineralocorticoids, etc. The participation in supporting of the metabolic homeostasis by means of the general and prolonged function of NpNh, affecting to systems of cells, tissues and organs, as a whole, by trans- and para-adenohypophysial tracts (osmoregulatory, vasopressure and reproductive functions, upon functional states of interrenal tissue, hepatocytes, etc.).

Constant influence upon all departments of the hypothalamo-hypophysial-gonadal axis, particularly

A - on Central Nerve System by means of metabolism of MA, GnRH, upon caudal neurosecretory system functions. B - on hypophysis by stimulating the sensitivity of the GTH cells to GnRH, on the secretion of several hypophysial tropic cells. C - on gonads by stimulation the smooth-muscle and follicular elements. Thus it is shown, that the leading functional role of NpNh before spawning consists in initiation of spawning behaviour, at the beginning of spawning - in a stimulation of deducing of reproductive products in a perigastrum and external environment (in ovulation and sperm release), after spawning - in their participation in protective-adaptive reactions of an organism to a physiological stress - spawning (by their antigonadotropic action especially).

Conditional notations to all of figures: ANh - anterior neurohypophysis, AVT - arginin-vasotocin, CNS - central nervous system, CRH - corticotropin-releasing hormone (corticoliberin), GnRH - gonadotropin-releasing hormone (gonadoliberin), IT - isotocin, MA - monoamines, Nh - neurohormones, NPO - nucleus preopticus, NpNh - nonapeptide neurohormones, NS - neurosecretory, PNh - posterior neurohypophysis, SGM - stages of gonadal maturity (IV - VI-II SGM).

This scheme reflects, first of all, the process of gradual development of the participation of PNS in adaptations of an organism at different stages of gonadal maturity, as against the standard schemes of the static neuro-endocrine mutual relations in the phenomenon of a breeding (e.g., scheme in Figure 4).

The antigonadotropic effect of NpNh influence appears to be the decisive for conservation metabolic equilibrium of an organism after spawning, as it allows to affect considerably on the character of exchange processes, by their possible "relaying" to a plastic exchange, that must be especially underlined. This mechanism apparently reflects a general principle of complex participation of NpNh in a breeding of vertebrates (combined uterotonic effect with metabolic) and it is possible to consider such a participation as the original key mechanism of a reversion or functional convertibility of exchange processes, absent at monocyclic forms (Garlov, 2002). Therefore we consider, that the scheme in a Fig. 6, being dynamic, is perfectly constructive for the elaboration of bioengineering methods to control the reproductive process of fishes [12,15,17].

Thus, the natural physiological stress arises in breeding process at many kinds of fishes apparently, that evidently also prove the preliminary results of the further development of researches PNS at Acipenseridae (Figure 1B). Moreover, the degree of its expression can reach thus critical limits for an organism even at polycyclic forms, as the elimination of a part of specimens, especially of males, after first spawning already (for example salmon, capelin, some kinds of Gobiidae), is widely extended. Therefore we consider possible to examine such stress as a state of physiological specific norm for the present species and, in the cautious form we assume, that at maximal expression it may act as the factor of natural selection at polycyclic species, or as the major mechanism ensuring digenesis at monocyclic of kinds [13].

The stress, which at all animals is characterized, first of all by disbolism of metabolic equilibrium towards catabolism, is accepted to consider as the result of the concrete stressful agent influence, then to systematize and to characterize it upon the nature of such an influence [4,7,53]. Stress at spawning, however, at the present investigated species of fishes, also is characterized by bright catabolic changes, that is well-known.

As we believe, it is the result of complications of mutual relation of the major physiological processes in an organism, which have a diversified course (or even opposite) adaptive character.

The material-power resources of an organism especially at the period of a reproduction, really, provide, first of all, two (2) the main basic directions of the interconnected and cooperating biological processes, in which are realized, as we believe, the regularities of development of various levels of biological organization.

At the first (1), it is cyclic processes of functioning of an organism in conditions of his "individual" physiological norm, which corresponds to a stage of individual development. These processes, which are carried out in interests of the present concrete specimen and, as we believe, the regularities of biogenetic law mainly are realized in them. It is natural, that all these processes having the main adaptive value (or effects) at the level of an organism, are characterized by a state of metabolic equilibrium optimum (for the present stage of ontogenesis) equation of anabolic and catabolic processes ensuring constant restoration of material - power expenses of an organism.

At the second (2), in an adult organism it is occurred the whole complex of cyclic reproductive processes (to which all stages of a lay of germinal foundation, differentiation and development of gonads, puberty and breeding are concerned), reflecting, first of all, function of an organism as self-reproductive system [1].

These reproductive processes reflect functions of an organism as component of system of an aboveorganism level (e.g. the population and species) and have an aboveorganism adaptive value (for each of these systems). These 2 directions of processes have well-known distinctions in the character of metabolism of an organism - the processes of the first direction (1) are characterized by a plastic metabolism, the second (2) - by generative. The latter (2) are characterised by the increase of the infringements of metabolic equilibrium, caused also by a natural physiological loads upon an organism, e.g. in connection with formation of reproductive system and metamorphosis, migrations, and breeding. In the ontogenesis all of these processes, in parallel proceeding and cooperating (1,2), are in dynamic equilibrium, conforming to a stage of a life cycle of specimen, and the filling up of the material - power expenses of an organism is characteristic for processes of "normal" functioning

(1). However at breeding season the equilibrium between these processes can be disturbed and the reproductive processes (2) may dominate. Such a dominance of processes of above organism adaptive character, practically only consuming material - power resources of an organism ("to export", as reproductive products and intensifying of a catabolism in connection with a breeding), can cause the conflict between these (- 1 and 2) processes in the form of the infringement of metabolic equilibrium and as the result - the exhaustion of material-power resources of an organism. We consider that stress, arising at breeding of the investigated species of fishes reflects this phenomenon of an organism level. So the adaptive reaction of PNS, having a protective-adaptive character, also is directed to restore the metabolic equilibrium by the suppressing of a level of catabolic processes.

Thus, during breeding of fishes there is a phenomenon of predominance of processes of an above-organism adaptive character (connected with spawning process) over cyclic processes of a "normal" (or daily) functioning of an organism. "Such a predominance, possibly, is capable to cause the conflict in the form of the infringement of metabolic equilibrium and physiological stress, consequently, which degree of manifestation reflects a level of this predominance" [13].

And, at last, stress arising at breeding we consider to be the final link in consecutive gradual processes ensuring the phenomenon of a progressing decrease of eurybiotic (viability, in particular), developing during a puberty, migrations and breeding of fish [9,13,19,21,31]. As the further researches of this phenomenon are of great interest for us both in scientific and in practice (fish-farm biotechnology) aspects, we offer a brief working hypothesis about the neuroendocrine mechanisms of the such a decrease of fish viability at breeding.

First of all NpNh play the important role in a determination of spawning and migratory behavior [2,9,31], exciting in CNS (in a complex with "sexual" hormones) the so-called: "Sexual Dominance". The initiation of spawning behaviour, caused by the NpNh influence on CNS (by vasotocin, mainly), is connected with an emotional stress especially expressed at males [5,31]. Let's remind, that at breeding season NpNh probably promote ovulation and sperm release (mainly isotocin in Teleostei, or oxytocin-like NpNh in Acipenseridae), stimulating a contraction of smooth-muscle elements of gonads (Figure 4) and their regulatory blood vessels (be-

sides neuro-transporting mechanisms of regulation). NpNH also potentiates the action of "sexual" hormones (inhibit the release of Gn-RH and increase the sensitivity of gonadotropocytes to it), participate in a regulation of generative and endocrine functions of gonads, stimulate a secretion of ACTH and thyrotropin, prolactin-like hormone [18,49]. (Figure 4,6). The function of PNS in realization of such a "stress-spawning" is shown especially brightly in connection with the wide influence of NpNh upon a complex of visceral organs and tissues- the excretory system, smooth-muscle elements of blood vessels (in peripheric endocrine glands, digestive tract), store of fats and carbohydrates (Figure 6). The degree of manifestation of such a reaction of PNS is in a direct dependence on the "intensity" of spawning course (and in a reverse dependence - on its multiply), being reduced to a stretched and portion spawning [13].

Conclusion

Thus, the consecutive reactions of PNS during breeding, as one of the topic integrating chains (together with hypothalamo-hypophysial -gonadal, -adrenal, -thyroid, and -somatomedin axis), probably, reflect its participation both in the gradual decrease of a viable degree, or of the resistance of an organism (effects of NpNh influence on reproductive behaviour and on reproductive system as a whole at the moment of spawning), and in the maintenance of metabolic equilibrium (the viscerotropic effect of NpNh). We assume, that the regulation of such cyclic dynamics in changes of a viable degree of an organism in a specimen ontogenesis occurs on a background of an exhaustion of an organism as a result of migrations and spawning and is carried out by a principle of a self-regulation, basically.

It is necessary to take into account, that the level of physiological stability of an organism of breeders (which bright parameter is just a state of PNS), which is reduced as much as possible till the breeding season, shows also especially rigid requirements to development and application of industrial fish-farm bioengineering. So, in a basis of bioengineering of administration of fish breeding process, it should be incorporated, first of all, a principle of physiologically adequate influences (in limit of a "physiological norm" for the present species and stage of a reproductive cycle of the specimen), taking into account the main ecologo-physiological features of an initial state of a certain organism. Thus it is necessary to combine the complex ecological approach (ecological treatments, approach empirical by origin) with "physiological" one (using the most modern hormonal preparations and other bioactive matters). And, at

last, it is necessary to use the basic principle of search of the most effective influences: first of all, *upon the centers of integration of a controlled function* (it is natural historically, that such treatments educated on a line of a "reversal" communication, e.g.: gonads - hypophysis - hypothalamus) and at the latter - *during the natural periods of the functional lability of an organism* (between the seasons of a long stabilization of functions - "latent" periods), e.g. at autumn or at spring, when the resistance (or defence ability) of an organism to a various natural influences ("unspecifically") weakens, e.g. at final period of gonadal maturity (just before breeding). And, at last, a certain principle of biotechnical treatment, as a whole, its establishment, choice and usage are determined by its purpose (or the "aim") corresponding to achievable effect, the major range of which application is necessary to present first of all (e.g., effect: physiological, fish-industrial, economic etc.).

Some of the above specified principles we also tried to take into account in our fish-farm biotechnique elaborations, of which theoretical basis was the representation about dual (alternative) functional value of PNS in neuroendocrine regulation of fish breeding [10,12,17] (Figure 6).

Bibliography

1. Anokhin PK. "Systemogenesis as the general law of evolutionary process". *Bulletin of Experimental Biology and Medicine* 8 (1948): 81-99.
2. Arvy L., et al. "La voie neurosecretrice hypothalamo-hypophysaire des Teleosteins". *The Journal of Physiology* 51 (1959): 1031-1085.
3. Barannikova IA. "Functional bases of migrations of fishes (in Russian)". Leningrad., "Science-Press" (1975): 210.
4. Billard R., et al. "Stress, environment and reproduction in Teleost fish". In: *Stress and Fish* (ed.: A. D. Pickering). Acad. Press, L., N-Y (1981): 185-208.
5. Demski LS and Sloan HE. "A direct magnocellular-preoptico-spinal pathway in goldfish: implications for control of sex behaviour". *Neuroscience Letters* 55 (1985): 283-288.
6. Donaldson EM. "The pituitary - interrenal axis is an indicator of stress in fish". In: *Stress and Fish*. L., N-Y (1981): 11-48.

7. Donaldson EM. "Reproductive induces as measures of the effects of environmental stressors in fish". *American Fisheries Society Symposium* 8 (1990): 109-122.
8. Eddy FB. "Effects of stress on osmotic and ionic regulation in fish". In: *Stress and Fish*. Acad. Press, L., N-Y (1981): 77-102.
9. Fontain M. "Endocrine glands and various forms of fish behaviour". In: *Acipenserids and Problems of sturgeon fishery farm industry*. (Ed.: J.J. Marti, I.A. Barannikova). Moscow: Food-processing industry (1972): 158-166.
10. Garlov PE. "Ecological-histophysiological and experimental research of a neurohypophysis in Russian sturgeon. In book: Scientific Reports of Institute of Marine Biology". *Vladivostok* 1 (1971): 52-56.
11. Garlov PE. "Morpho-functional analysis of some mechanisms of neurosecretory regulation of reproduction in some fish". Proc. of the VII Internat. Sympos. on Neurosecretion "Evolutionary aspects of neuroendocrinology". Leningrad: Scient. Counc. of the combined probl. of Physiol. of man and animals, Acad. of Sci. of the USSR (1976): 61.
12. Garlov PE. "New methods of administration of a breeding of trade fishes". *Fishery Farm* 11 (1990): 43-46.
13. Garlov PE. "Stress as a state of a specific physiological norm, arising at lumpsum spawning at some kinds of fish. In: Ecological Problems in ontogenesis of fish (physiologo-biochemical aspects). Moscow: M. University (2001): 226-282.
14. Garlov PE. "Morpho-functional basis of a plasticity of neurosecretory cells". *Cytology* 44 (2002): 747-767.
15. Garlov PE., et al. "The results of usage of a preparation of the isolated anterior pituitary lobe for a stimulation of female maturing of the Russian sturgeon (*Acipenser gueldenstaedtii* Brandt) and stellate (*Acipenser stellatus* Pallas)". *Questions of Ichthyology* 27 (1987): 844-851.
16. Garlov PE and Mosyagina MV. "Structure and function of myoid-secretory (steroid-producing) cells in follicles of an ovary of sturgeon fishes at spawning season". *Cytology* 40 (1998): 502-513 (in Russian).
17. Garlov PE and Polenov AL. "The elaboration of new methods in breeding administration of trade fishes". In: *Automatization of physiological Researches*. Leningrad, Science (1988): 220-236.
18. Garlov PE and Polenov AL. "The functional cytomorphology of the praeoptic-pituitary neurosecretory system of fishes". *Cytology* 38 (1996): 275-299 (in Russian).
19. Gerbilsky NL. "Specificity and problems of ecological histophysiology as one of directions in histological researches". *Arhiv Anatom., Histol. and Embriology* 13 (1956): 14-21.
20. Godwin J., et al. "Behavioral sex change in the absence of gonads in a coral reef fish". *Proceedings of the Royal Society of London. Series B, Biological Sciences* 263 (1996): 1683-1688.
21. Hoar WS and Randall DJ. "Fish physiology". N.-Y., L.: Acad. Press 2 (1969): 444.
22. Honma J and Tamura E. "Studies on the Japanese chars of the genus *Salvelinus*. I. Seasonal changes in the endocrine glands of the Nikko-Iwana, *Salvelinus leucomaenus pluvius* (Hilendorf)". *Bulletin of the Japanese Society of Scientific Fisheries* 31 (1965): 867-887.
23. Kaul S and Vollrath L. "The goldfish pituitary. II. Innervation". *Cell and Tissue Research* 154 (1974): 231-249.
24. Knight WR and Knight JN. "Telencephalon removal does not disrupt the vasotocin-induced spawning reflex in killifish, *fundulus heteroclitus*". *Journal of Experimental Zoology* 276 (1974): 296-300.
25. Krayushkina LS and Moiseenko SN. "Hypothalamo-hypophysial neurosecretory system of the ecologically various forms of sturgeon fishes during adaptation to hypertonic medium". In: *Questions of Neuroendocrinology*. Leningrad, Len. University (1983): 93-103.
26. Mellinger J. "Les relations Neuro-Vasculoglandulaires dans l'Appareil Hypophysaire de Roussette *Scyliorhynchus caniculus* (L.)". These Doctorat Sciences, Strasbourg (1963): 1-201.
27. Meurling P and Bjorklund A. "The arrangement of neurosecretory and catecholamine fibres in relation to the pituitary intermedia cells of the scate, *Raja radiata*". *Z. Zellforsch* 108.1 (1970): 81-92.

28. Moiseeva EB. "Histophysiology of the hypothalamo-hypophysial system of sea fishes in connection with spawning". *Proceedings of VNIRO* 111 (1975): 106-124.
29. Moitra KS and Medya ChB. "Morpho-histology of the hypothalamo-neurohypophysial system in relation to gonadal maturation in *Cirrinus mrigala* (Ham.), a freshwater indian carp". *Anatomischer Anzeiger* 148 (1980): 409-421.
30. Oganesyanyan SA. "Change of morpho-functional state of hypothalamo-pituitary neurosecretory system of capelin in Barents Sea in connection with migration and breeding". In: Ecology and biological productivity of Barents Sea. Iss.: Polar institute of fishery and oceanography. Murmansk (1986): 239-240.
31. Ota Y., et al. "Sexually different expression of neurohypophysial hormone genes in the preoptic nucleus of pre-spawning chum salmon". *Zoological Science* 13 (1996): 593-601.
32. Oztan N. "The structure of the hypothalamic neurosecretory cells of *Zoarces viviparus* L. under the conditions of constant dark and light during the reproductive cycle". *Z. Zellforsch* 75 (1966): 66-82.
33. Peter RE. "Vertebrate neurohormonal systems". In: Vertebrate endocrinology. Fundamentals and biomedical implications. (Ed.: Pickering A.). N.Y.: Acad. Press 1 (1986): 57-104.
34. Pickford GE and Strecker EL. "The spawning reflex response of the killifish, *Fundulus heteroclitus*: isotocin is relatively inactive in comparison with arginine vasotocin". *Gen. Compar. Endocrinol* 32 (1977): 132-137.
35. Polenov AL., et al. "The Hypothalamo-Hypophysial System in Acipenseridae VI. The proximal neurosecretory contact region". *Cell and Tissue Research* 170 (1976): 129-144.
36. Polenov AL and Garlov PE. "The hypothalamo-hypophysial system in *Acipenseridae*. I. Ultrastructural organization of large neurosecretory terminals (Herring bodies) and axoventricular contacts". *Z. Zellforsch* 116 (1971): 349-374.
37. Polenov AL and Garlov PE. "The hypothalamo-hypophysial system in Acipenseridae. III. The Neurohypophysis of *Acipenser güldenstädti* Brandt and *Acipenser stellatus* Pallas". *Z. Zellforsch* 136 (1973): 461-477.
38. Polenov AL and Garlov PE. "The hypothalamo-hypophysial system in Acipenseridae. IV. The functional morphology of the neurohypophysis of *Acipenser güldenstädti* Brandt and *Acipenser stellatus* Pallas after exposure to different salinities". *Z. Zellforsch* 148 (1974): 259-275.
39. Polenov AL., et al. "The hypothalamo-hypophysial system in Acipenseridae. II. Adrenergic structures of the hypophysial neurointermediate complex". *Z. Zellforsch* 128 (1972): 470-481.
40. Polenov AL., et al. "The Hypothalamo-Hypophysial System in Acipenseridae V. Ecological-histophysiological analysis of the neurohypophysis of the female sturgeon *Acipenser güldenstädtii* Brandt during up-stream migration and after spawning". *Cell and Tissue Research* 170 (1976): 113-128.
41. Polenov AL., et al. "Neuro-endocrine mechanisms of realisation of adaptive reactions in Acipenseridae to changes of water salinity". First Europ. Ichthyological Congress, Paper Abstr. Sarajevo, Jugoslavija 21.29 (1973): 120.
42. Polenov AL., et al. "The hypothalamo-hypophysial system of the wild carp, *Cyprinus carpio* L. III. Changes in the anterior and posterior neurohypophysis during spawning". *Z. Mikrosk Anat. Forsch* 100 (1986): 990-1006.
43. Polenov AL., et al. "Preoptic nucleus and neurohypophysis in sturgeons (*Acipenser güldenstädti* Brandt) at different stages of their life cycle and in experiments". *General and Comparative Endocrinology* (Abstracts of papers of the VI Congr. of Europ. Compar. Endocrinol 18 (1972): 617.
44. Prakash MM., et al. "Cyclical changes in the hypothalamo-hypophysial-gonadal system in *Notopterus chilata* (Ham.)". *Z. mikrosk.-anat. Forsch* 98 (1984): 225-240.
45. Prasada Rao PD. "The hypophysis of two freshwater teleosts, *Labeo calbasu* (Ham.) and *Puntius sarana* (Ham.)". *Zoologischer Anzeiger* 184 (1970): 335-348.
46. Ramadan AA., et al. "Cyclic histological changes in the pituitary gland of *Sparus aurata* in correlation to the gonadal cycle". *Folia Morphologica* 36 (1988): 113-124.

47. Robertson OH., *et al.* "Physiological changes occurring in the blood of the Pacific salmon (*Oncorhynchus tshawytscha*) accompanying sexual maturation and spawning". *Endocrinology* 67 (1961): 746-773.
48. Schiebler TH and Hartmann J. "Histologische und histochemische Untersuchungen am neurosekretorische Zwischenhirn-Hypophysensystem von Teleostiern unter normalen und experimentellen Bedingungen". *Z. Zellforsch* 60 (1963): 89-146.
49. Sirotkin AV., *et al.* "Participation of nonapeptide neurohormones in a regulation of a reproductive function in animals // Results of Science and Engineering. Moscow. The Edition of State Committee of Science and Engineering (GKNT), All-Union research institute of the scientific and technical information (VINITI), Academy of Sciences of USSR". *Neuroendocrine Mechanisms of the Control of Reproduction of Wild and Agricultural Animals* 15 (1987): 21-30.
50. Sokol HN. "Cytological changes in the teleost pituitary associated with the reproductive cycle". *Journal of Morphology* 109 (1961): 219-236.
51. Terlou M., *et al.* "Localization of monoamine in the forebrain of two salmonid species, with special reference to the hypothalamo-hypophysial system". *Cell and Tissue Research* 190 (1978): 417-434.
52. Thripathi IM and Pandey K. "Hypothalamo-hypophysial neurosecretory system of the mud eel *Amphipnous cuchia* (Ham.)". *Archives of Biological Sciences* 97 (1986): 267-277.
53. Wendelaar Bonga SE. "The stress response in fish". *Physiological Reviews* 77 (1997): 591-625.
54. Wong CJH. "Afferent and efferent connections of the diencephalic prepacemaker nucleus in the weakly electric fish, *Eigenmannia virescens* - interactions between the electromotor system and the neuroendocrine axis". *Journal of Comparative Neurology* 383 (1997): 18-41.