



Evaluation of Genotoxicity Caused by Heavy Metals Emitted from Brick Kiln among Children in Brick Kiln Industry

Mehwish David*, Naheed Turi and Sarwat Jahan

Reproductive Physiology Laboratory, Quaid-I-Azam University, Islamabad, Pakistan

*Corresponding Author: Mehwish David, Reproductive Physiology Laboratory, Quaid-I-Azam University, Islamabad, Pakistan.

Received: June 19, 2019; Published: July 30, 2019

DOI: 10.31080/ASPE.2019.02.0116

Abstract

The study was designed to investigate the qualitative analysis of metal detection in blood serum and DNA damage among children working at brick kiln sites. A total of 232 blood samples were collected from different areas of Punjab, Pakistan. Analysis of heavy metals in blood was done by Atomic absorption spectroscopy, while DNA damage in white blood cells was perceived through single cell gel electrophoresis. Highly significant levels of zinc were perceived in children living in the vicinity of brick kiln areas, while concentrations of cadmium, chromium and nickel were also detected in quite high quantities. The data revealed that health risks and DNA damage are associated in children that are exposed to heavy metals emitted from brick kilns.

Keywords: Heavy Metals; Genotoxicity; Children; Comet Assay

Introduction

Environmental pollution is a matter of global concern [1]. In developed countries, awareness and maintenance of healthy environment are subjects of concern. However, developing countries lack such attitude. With the increasing need for industrialization, the rate of environmental degradation due to pollution is also increasing on a daily basis [2]. Different study groups have reported that exposure to elevated levels of heavy metals such as lead, cadmium or chromium in brick kiln soil is found to induce neurological, hematological, gastrointestinal and immunological pathologies and even neoplasms, in which chief target is heme synthesis enzymes, thiol-containing antioxidants and enzymes [2-4]. Usually diesel is used for combustion in kilns for baking of bricks. The products and byproducts formed by complete/incomplete combustion of diesel are known to have genotoxic, cytotoxic, carcinogenic, free radical generating and DNA damaging effects [4]. Exposure to heat and radiation can cause genetic mutations, DNA strand breaks, DNA protein cross-links, radiation pneumonitis, fibrosis and diffuse alveolitis [4].

The present study aims to investigate the DNA damage potential of heavy metals emitted from brick kilns among children living at brick kiln sites, Rawat Pakistan.

Materials and Methods

Sampling and Subject selection

For sampling coal clay brick kilns at Rawat, near Rawalpindi, Pakistan were selected and visited. The study pattern included personal interview and questionnaire filling, measurement of height and weight and collection of blood samples.

Study design

The present study was conducted at Reproductive Physiology Laboratory, Department of Animal Sciences, Faculty of Biological Sciences, Quaid i Azam University Islamabad. To study the toxic effects of brick kiln emitted pollutants on child health as well as on DNA damage, brick kilns from different regions of District Rawat, Punjab province were selected and sampling was done from June 2018 to June 2019. The approval to conduct this study was obtained from Ethical Committee of the Department of Animal Sciences, Quaid-i-Azam University Islamabad, Pakistan.

Description of study area

Different brick kiln sites from District Rawalpindi were selected for present study and will be given a named as site 1, 2 and 3 and so on respectively. The brick kilns will be selected on the basis of production capacity, functionality and nearness to communities and operated throughout the year.

Subject selection

A total number of age groups of brick kiln children (n= 232) living for varied years of exposure to brick kiln pollutants as well as not exposed from aged 7-17 years were considered.

Blood sample collection

After having consent forms signed by their guardians, blood samples were collected from venous blood in a 5ml syringe by registered female/male nurse. The blood obtained was then strained into the 5ml heparinized tube and stored at -4°C for atomic absorption spectroscopy.

Analysis of heavy metals (Atomic absorption)

The method followed in this study was based on the method of Tripathy, *et al.* (1997) with some modifications.

1. Aliquot of 0.5ml of each sample was mixed with 5ml of freshly prepared mixture of concentrated 69% HNO₃ - 37% HCL (3:1, v/v) and kept for 1 hour at room temperature. The mixture was heated on hot plate at 70 C until cleared.
2. Solution was filtered through filter paper and the filtrate was made up to 10ml with distilled water.
3. Blanks were run following the same protocol replacing blood samples with 0.5ml distilled water.
4. Metals concentrations were carried out using AA 40 FS Sequential Atomic Absorption Spectrometer (Varian, AA24FS, USA).
5. Different metals specific lamps were used with particular wavelength.
6. A series of standards for elements under analysis were run.
7. Calibration curve was constructed by plotting the concentration of standard against absorbance. Concentrations were obtained in ppm and expressed in mg/1.

Single Cell Gel Electrophoresis (SCGE)/Comet assay

This practice includes, embedding of single cell (spermatozoa) in agarose, lysing the cells and liberating out DNA by electrophoresis to form a comet tail cleaving the head of intact DNA. Intact and damaged DNA is pictured by fluorescence microscopy and computed by image analysis.

The first step was the assemblage of sperms. Right epididymis was crushed with forceps in phosphate buffer saline (PBS) in order to collect sperms and kept at 37°C for comet assay. The sperms were diluted in PBS (1 ml). The colour HUE of the pictures were changed to black and white to clearly visualize the DNA damage.

Following are the basic steps of comet assay

Microscope slides preparation layered with cells in agarose

- Lysis of membranes to release DNA
- Single strand DNA formed by contact to alkali (pH-13)
- Neutral Electrophoresis
- DNA staining and analysis
- Comet scoring

The whole procedure was performed under low light in order to avoid induced damage to DNA.

The detail of each step is as follows

Slide preparation

Frosted microscopic slides were moderately heated on slide warmer, sheltered with 100µL of 1% regular melting point agarose (RMPA) prepared in distilled water at 40°C and straightaway covered with a large (22 x 50mm) coverslip. The slides were kept in a chilled tray and left at 4°C for at least 30 min to let the agarose to solidify. The coverslips were then removed and second layer of 85 µL was made on top of the first layer containing 20 µL of sperm suspension and 65µL of 1% low melting point agarose (LMPA) at 37°C. This cell suspension creates a layer on top of the first agarose layer, covered with a coverslip and permitted to solidify.

Lysis

The cells were then lysed by eliminating the coverslips and immersing the slides in a histology jar containing freshly made cold lysis buffer (pH =10.3). The lysis buffer had 2.5 M NaCl, 100 mM EDTA, 10 mM Tris Base, (pH= 10.3), 1% (w/v) Triton X-100 (Dithiothreitol) (Villani, *et al.* 2012). Triton X-100 was added just afore commencing the lysis. EDTA was dissolve with the aid of NaOH pellets @ 0.2 g/ 10ml of solution. The slides were incubated with lysing solution for 24 hr at room temperature. After the incubation the slides were sweep away with distilled water three times at 20 min pauses by transferring the rack from one jar to another, to remove traces of salt and detergent. The jar was topped with aluminum foil to minimize light.

Neutral electrophoresis

Slides were steadily placed in columns in the electrophoresis tray fronting towards anode containing a mixture of 1200 ml distilled water and 300 ml neutral electrophoresis buffer (54 g/L Tris base, 27.5 g/L boric acid, 0.5 M EDTA) at pH=8.0. Boric acid was dissolved at 45°C while stirring. Slides were then equilibrated with electrophoresis buffer for 20 min. Electrophoresis was accomplished for 20 min at 25V (0.714 V/ cm). When electrophoresis

was finished, the buffer was drained from the tank and the tray removed. Slides were covered with aluminum foil and air-dried overnight at 5°C.

Analysis and scoring of the slides

The slides were rehydrated with distilled water for 60 min stained with Acridine orange (300-400 µL of 20µg/ml of distilled water) and analyzed under epifluorescent microscopy (400X, Nikon AFX-1 Optiphot) and digital images were taken for succeeding analyses/scoring with TRITEK software. Following sperm DNA comet parameters were recorded.

Tail length (TL, µm), Tail DNA (TDNA, %) and Tail moment (TM, µm)

Statistical analysis

The data was tabulated in the form of mean, standard deviation and standard error. Analysis of data was performed with unpaired t test, carried by a computer software Graph Pad Prism (version 5).

Results

In current study, two groups were studied, mentioned as Control (n=98) and Exposed (n=134, those children working in brick kiln industry) with mean age (years) of 9.88 ± 0.85 and 12.97 ± 1.32 years.

Heavy metals analysis

Significant difference (p<0.05) was found in the concentration of Cd, Cr, Ni in exposed group as compared to control groups. The concentration of Zn was significantly high (p<0.01) in exposed group as compared to control group. Concentration of these heavy metals are shown in Table 1.

S.no	Heavy metals	Control Children (n=98)	Exposed children (n=134)
1	Zinc (mg/l)	17.97±1.99	26.63±2.21**
2	Cadmium (mg/l)	1.40±0.22	2.16±0.15*
3	Chromium ((mg/l)	0.87±0.05	1.09±0.05*
4	Nickel ((mg/l)	0.54±0.07	0.96±0.15*

Table 1: Mean ± SEM heavy metals (zinc, cadmium, chromium, nickel) concentration in whole blood of control group and exposed group.

Values are expressed as mean ± SEM

*p< 0.05, **p< 0.01, ***p< 0.001

Assessment of DNA damage

Figure 1 shows the DNA damage in exposed group as compared to the control group. A comet has been formed that shows the nuclear disposition and DNA damage as compared to control group.

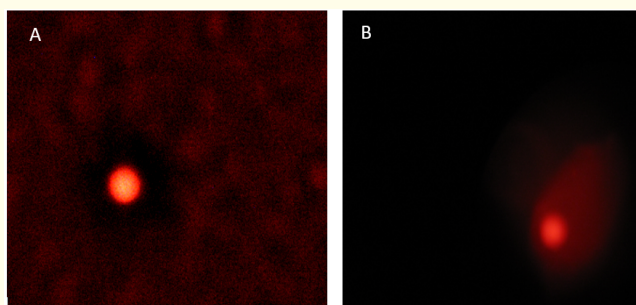


Figure 1: Diagram showing comet formed in control and exposed group. (a) The DNA is intact with no damage. (b) A comet tail has been formed which shows DNA displacement and DNA damage.

Discussion

For centuries, air pollution has been considered to have detrimental effects on human health [5]. They cause large number of respiratory disorders such as chronic obstructive pulmonary disease, bronchitis, asthma, pneumoconiosis, emphysema, silicosis and asbestosis [5-8]. Considering different anthropogenic sources of pollution, soil is thought to be the most crucial source in developing countries due to the changes in the land use pattern during the past few decades [9]. As brick kiln industries are releasing poisonous gases as well as heavy metals that become part of the environment thus, imparting health risks among nearby populations. In current findings, the concentration of heavy metals i.e, cadmium, chromium and nickel was found quite high in blood drawn from children. Similar results have also been suggested by Jahan., et al. 2016 among male subjects [10].

Previously Kaushik., et al. [4] reported that exposure to heat and radiation can cause genetic mutations, DNA strand breaks, DNA protein cross-links, radiation pneumonitis, fibrosis and diffuse alveolitis [4]. Similarly, in present study, DNA damage with the formation of comet was evident in blood cells, that might be associated with genotoxicity induced by heavy metals in nucleus.

Conclusion

It is concluded from the present study that heavy metals get accumulated in the blood and become part of the circulation that may affect physiology of different body organs. Exposure to heavy metals induces genotoxic effects on blood in children living at/near brick kiln industries.

Bibliography

1. Ishaq M., *et al.* "Heavy metals in brick kiln located area using atomic absorption spectrophotometer: A case study from the city of Peshawar, Pakistan". *Environmental Monitoring and Assessment* 166 (2010): 409-420.
2. Ismail M., *et al.* "Effect of Brick Kilns' Emissions on Heavy Metal (Cd and Cr) Content of Contiguous Soil and Plants". *Sarhad Journal of Agriculture* 28 (2012): 403-409.
3. Flora SJS., *et al.* "Heavy metal induced oxidative stress and its possible reversal by chelation therapy". *Indian Journal of Medical Research* (2008).
4. Kaushik R., *et al.* "Pulmonary dysfunctions, oxidative stress and DNA damage in brick kiln workers". *Human and Experimental Toxicology* (2012).
5. Raza A., *et al.* "Particulate matter associated lung function decline in brick kiln workers of Jalalpur Jattan, Pakistan". *Pakistan Journal of Zoology* 46 (2014): 237-243.
6. Hauser R., *et al.* "Male reproductive disorders, diseases, and costs of exposure to endocrine-disrupting chemicals in the European Union". *The Journal of Clinical Endocrinology and Metabolism* 100 (2015): 1267-1277.
7. Kim KH., *et al.* "A review on the human health impact of airborne particulate matter". *Environment International* 74 (2015): 136-143.
8. Woodruff TJ., *et al.* "Proceedings of the Summit on Environmental Challenges to Reproductive Health and Fertility: executive summary". *Fertility and Sterility* 89 (2008): 281-300.
9. Achakzai K., *et al.* "Air pollution tolerance index of plants around brick kilns in Rawalpindi, Pakistan". *Journal of Environmental Economics and Management* 190 (2017): 252-258.
10. Jahan S., *et al.* "Antioxidant enzymes status and reproductive health of adult male workers exposed to brick kiln pollutants in Pakistan". *Environmental Science and Pollution Research* 23 (2016): 12932-12940.

Volume 2 Issue 8 August 2019

© All rights are reserved by Mehwish David., *et al.*