



High Nutritional Value Processed Cheese Containing Potato Peels

Wafaa M Salama*, Esmat A. Aly and Atiat S. Dosuky,*Dairy Research Department, Food Technology Research Institute, Agricultural Research Center, Giza, Egypt****Corresponding Author:** Wafaa M Salama, Dairy Research Department, Food Technology Research Institute, Agricultural Research Center, Giza, Egypt.**DOI:** 10.31080/ASNH.2024.08.1444**Received:** September 12, 2024**Published:** September 26, 2024© All rights are reserved by **Wafaa M Salama., et al.****Abstract**

The present study was conducted to investigate the effect of partially incorporating potato peel powder (PPP) in the formula of processed cheese on the physicochemical, textural and sensory properties of the final product. PPP was used to substitute 1, 2, and 4% of the fresh soft cheese curd in a processed cheese blend. The resultant processed cheese samples were stored for 90 days at $5 \pm 2^\circ\text{C}$. The results found that incorporation of PPP in processed cheese increased the protein and ash contents and acidity values but decreased moisture, meltability, and oil separation of the resultant cheese. All texture parameters (hardness, springiness, gumminess, cohesiveness, and chewiness) except adhesiveness, increased with the increased amount of PPP. Also, higher total phenols content (TPC) and antioxidant activity (AOA) values have been obtained by increasing the added amount of PPP and also with the progression of the storage period. The best sensory evaluation was found with control samples followed by processed cheese samples containing 1 and 2% PPP, while the lowest sensory degrees were observed with 4% PPP. According to this study, PPP may be added to processed cheese at a ratio of 1 and 2% as an inexpensive, healthy, and useful component.

Keywords: Processed Cheese; Potato Peel Powder; Texture Profile; Antioxidants And Sensory Properties**Introduction**

It is well-known that the food industry leads to the accumulation of a huge amount of waste and byproducts. The disposal of these agro-food wastes in an improper manner leads to environmental contamination. Additionally, many important nutrients such as antioxidants, some minerals, vitamins, etc are lost in these wastes. For this reason, the exploitation of these wastes achieves the concept of sustainable development, protects the environment, and opens a new approach to obtain a lot of additives of great value, which might be added to improve the physicochemical, sensory, and functional properties of food.

Potato peels (PP), generated from the potato industry, is an inexpensive agro-industrial waste and contains a large quantity of starch, non-starch polysaccharides, and lignin. Moreover, it is considered an excellent source of several bioactive compounds including fibers, minerals, and polyphenols. For this reason, it is not only considered a cheap source but also a valuable base material for the extraction of beneficial components such as natural antioxidants, dietary fiber...etc [1]. Therefore, it is well-known for its strong bioactive properties and its role in prolonging the shelf-life

of food products [2,3]. Previously, PP has been exploited as a part of fermentation media, in synthesizing numerous compounds such as lactic acid, ethanol, acetic acid, biohydrogen, enzymes, biogas, and biofertilizers [4].

Processed cheese is among the most popular dairy products that are commonly consumed among different age categories. It is produced by mixing natural cheeses of various degrees of maturity in the presence of emulsifying salts under heating and normal pressure or partial vacuum until a homogeneous mass is obtained [5]. Several ingredients can be used in manufacturing processed cheese including dairy and non-dairy products such as vegetables, fruits, and spices [6]. Also, many by-products and food processing residues, which are of high nutritional and functional values, might be used, which reflects in turn on the nutritional value of the resultant processed cheese. Subsequently, there is a great variety of these commercially marketed cheeses in terms of taste, color, and composition, which reflects on their increased acceptance and thus an increase in their economic return. Previous studies reported that the fortifying processed cheese with natural bioactive ingredients has increased significantly in the past few years, for example, the

incorporation of soy bean flour [7], chickpea flour [8], maize germ cake [9] and wheat germ powder [10] into cheeses, which resulted in improved nutritional value and organoleptic properties, and extended the shelf life of cheese types. To our knowledge, there is no existing literature on using PPP as a food raw material in processed cheese manufacturing. Therefore, the main objective of the present study was to investigate the effects of potato peel powder (PPP) on the physicochemical, textural, and sensory characteristics as well as nutritional value of processed cheese.

Materials and Methods

Materials, Chemicals, and Reagents

The Ras cheese, 3 months old and unsalted butter were purchased from a local market in Giza, Egypt. Fresh Soft cheese curd was manufactured using fresh skim buffalo milk obtained from the Faculty of Agriculture, Cairo University, Egypt. Cooking salt (Joha S9s emulsifying salt special) was obtained from BK Ladenburg Corp., GmbH, Germany. 2,2-diphenyl-1-picrylhydrazyl (DPPH) was obtained from Sigma-Aldrich (Steinheim, Germany) while gallic acid monohydrate and Folin-Ciocalteu reagent were obtained from Fluka (Madrid, Spain). All reagents used were of analytical grade.

Preparation of potato peel powder

Potato tubers were washed with water and peeled carefully using a knife. The whole potato peels were air dried in a ventilated oven at 40°C for 48 h, ground to a fine powder then sieved (60mesh). The obtained fine powder was packaged in polyethylene bags and kept refrigerated and used during 30 days in the experiments. The composition of potato peel powder is as shown in table 1.

Processing of processed cheese

The various formulations of processed cheese were manufactured according to [11]. Fresh soft cheese curd, Ras cheese, butter, water, and emulsifying salt with/or without adding potato peel powder have been used in manufacturing the processed cheese samples. Generally, the different blends were formulated to contain 60% moisture, 40% fat per dry matter, and 2.5% emulsifying salts (Table 2 shows the formulations of processed cheese samples). Control samples and other treatments have been formulated with added 0, 1, 2, and 4% of PPP and named C, T₁, T₂, and T₃, respectively.

All ingredients of each blend were placed and well-mixed in a double jacket pan (batch capacity of 2 kg at a stirring velocity of 120 – 140 rpm). The obtained mix of the blend has been cooked at 85 ± 2°C using indirect steam for 10 min at a pressure of 2-2.5 kg/cm². After that, the resultant processed cheese was promptly hot-filled into appropriate glass receptacles, sealed, kept at 5°C for 90 days, and subjected to analysis at intervals of 3 months. The chemical compositions of Ras cheese, soft cheese curd, and PPP used in formulating spreadable processed cheese are shown in table 1.

Analytical methods

Three replicates were carried out for each processed cheese treatment. The prepared samples underwent the following analyses

Proximate analyses

The proximate analyses including moisture, protein, fat, ash, pH, and acidity have been determined according to [12]. Specific factors of 6.25 and 6.38 have been used to calculate the total protein content in PPP, and dairy materials, respectively. Soluble nitrogen content was estimated as described by [12]. Meltability and oil separation were estimated according to [13], and [14] respectively. Texture parameters were measured at 23°C as described by [15] using an Instron Universal Testing Machine model 1195, Stable Micro System (SMS) Ltd., Godalming, UK, loaded with Dimension Software SMS program.

Extraction and determination of Total phenols content (TPC) and antioxidant activity (AOA)

For extracting the phenolic compounds, the processed cheese (2g) was mixed with an aqueous methanolic solution (30 ml, 70:30 v/v) with stirring for 24 h at ambient temperature protected from the light to avoid polyphenols degradation by photo-oxidation. After centrifugation for 20 min at 4000 g, the supernatant was collected and the residue was re-extracted with an additional 30 ml of the same solution and recombined together. The obtained supernatant has been utilized in the estimation of TPC, and AOA.

Total phenols content (TPC) has been estimated according to [16] and the results were expressed as mg GAE/g. The antioxidant activity (AOA) has been estimated using DPPH as radical scavenging activity of methanolic extracts according to [17].

Sensory evaluation

Processed cheese samples were subjected to sensory evaluation according to [18]. Ten expert panelists belonging to Dairy Research Dept., Food Technology Research Institute, Giza, Egypt were recruited to conduct the sensory evaluation using the following descriptors: color (20 points), texture (40 points), flavor (40 points), and overall acceptability (100 points).

Statistical analysis

All data (mean of three replicates) were analyzed by the General Linear Models of [19]. Means were compared by Duncan’s test at the significance level of P ≤ 0.05.

Results and Discussion

Chemical composition

Although agro-industrial wastes are cheap sources, they are well-known for containing several beneficial ingredients that recently received more attention to be exploited as food additives

for improving the physicochemical and functional properties of foods. Among these wastes, potato peels recently gained more attention as they represent an excellent source of several nutrients including protein, fiber, and polyphenols among others. The findings presented in Table1 revealed that PPP had a higher amount of total protein of 16.86%, lower moisture content of 4.2%, and lower fat content of 0.48%. The ash content of potato peel powder is accounting for 8.56%. The pH value of this powder was 5.47. These findings are in general agreement with those reported by [20] who found a similar proximate composition for potato peel powder with slightly lower values. Also, similar results have been

obtained by [21], [22] and [23]. Also, table 1 displayed the chemical composition of Ras cheese and fresh soft cheese curd used in preparing the processed cheese. Ras cheese had 35% moisture, 30% fat, 23.5% protein, 3.5% salt, and 6.5% ash, and also had a pH value of 5.86. The current results exhibited that soft-cured cheese had 68% moisture, 16.5% protein, 0.5% salt, 2.4% ash, and a pH value of 6.61. Awad., *et al.* [24] used the same raw material (Ras cheese and soft curd cheese) in preparing the processed cheese but they reported relatively higher values of these parameters, except ash content. This could be due to the variation in raw material's age, and composition.

Ingredient (%)	Ras cheese	Soft cheese curd	Potato peels powder
Moisture	35	68	4.2
Fat	30	-	0.48
Total protein	23.5	16.5	16.86
Salt	3.5	0.5	-
Ash	6.5	2.4	8.56
pH values	5.86	6.61	5.47
TPC (mg GAE/g)	---	---	25.87
AOA (%)	---	---	48.56

Table 1: Chemical composition (%) of potato peel powder, Ras cheese and soft cheese curd used in formulating the processed cheese.

Values are means of three independent replicates. TPC: Total Phenolic Content, GAE: Gallic Acid Equivalent, AOA: Antioxidant Activity.

Ingredients	C	T ₁	T ₂	T ₃
Ras Cheese	25.39	25.39	25.39	25.39
Fresh soft curd	29.50	26.65	23.74	17.78
PPP	0	1.00	2.00	4.00
Emulsifying salt	2.50	2.50	2.50	2.50
Butter	12.35	12.35	12.35	12.35
Water	30.46	32.43	34.40	38.49
Total	100	100	100	100

Table 2: Composition of different blends of processed cheese made using potato peels powder (Kg/100Kg).

C, T₁, T₂, T₃: Processed cheese samples supplemented with 0, 1, 2 and 4% potato peel powder.

Table 3 displayed the chemical composition of the formulated processed cheese samples with/without PPP. The current results confirmed that various formulated processed cheese samples have proximate compositions very close to the proposed composition adjusted during the formulation of their blends. By the end of storage, a lower moisture % was found in the T₃ (4%PPP) samples, while the control samples had the highest moisture %.These results are in line with the finding of [9]. The current results showed an increase in total protein, soluble nitrogen, and ash contents by increasing the added amount of PPP. This increment in total protein, soluble nitrogen, and ash contents in processed cheese treatments with added PPP as a substitution for raw cheese is related to the higher values of protein and ash in PPP compared to soft

curd used in the base formula in table 1. Similar results have been reported by [24,25] who reported an increment in protein and ash contents by adding lupin paste or date seed powder, respectively. Significant changes were found in the protein, soluble nitrogen and ash values of all samples during cold storage. Similar results were reported by [9]. Also, the findings in Table 3 revealed that the contents of fat, protein, and ash slightly increased with the progress of cold storage. So, these values were higher at 90 days of cold storage, compared to the first day. Also, during storage, soluble nitrogen values increased with the progress of the cold storage period in all treatments including the control sample. The enzymatic activity of product-resistant proteinase represents the main contributor to the observed changes in soluble nitrogen. Another explanation is

the breakdown of emulsifying salts, polyphosphate in particular, leading to higher protein solubilization. Awad., *et al.* [24] obtained similar findings. Generally, after 90 days of cold storage, T₃ had the

lowest moisture content and the highest contents of ash, fat, protein, and soluble nitrogen, compared to the control sample and T₁, and T₂.

Property	Storage time (days)	Treatments*			
		C	T ₁	T ₂	T ₃
Moisture	1	59.76 ^{Aa}	59.54 ^{Bb}	58.91 ^{Cc}	58.48 ^{Dd}
	90	59.50 ^{Ab}	58.33 ^{Be}	58.17 ^{Cf}	57.82 ^{Dg}
Fat	1	24.76 ^{Bd}	24.59 ^{Ce}	24.89 ^{Ac}	24.98 ^{Ab}
	90	24.81 ^{Bc}	24.84 ^{Bc}	24.93 ^{ABb}	25.16 ^{Aa}
Protein	1	16.61 ^{Cf}	16.68 ^{B^Ce}	16.71 ^{Be}	16.92 ^{Ac}
	90	16.83 ^{Bd}	16.91 ^{ABc}	17.08 ^{Ab}	17.15 ^{Aa}
Ash	1	4.18 ^{Cd}	4.33 ^{Bb}	4.39 ^{Bb}	4.43 ^{Aa}
	90	4.23 ^{Cc}	4.35 ^{Bb}	4.41 ^{Aab}	4.46 ^{Aa}
Soluble nitrogen	1	1.66 ^{Df}	1.74 ^{Cd}	1.96 ^{Bb}	2.15 ^{Ab}
	90	1.91 ^{Cc}	1.98 ^{Cb}	2.43 ^{Ba}	2.54 ^{Aa}

Table 3: Chemical composition (%) of processed cheese containing different levels of potato peel powder when fresh and during storage at refrigerator (5 ± 1°C).

*C, T₁, T₂, T₃: processed cheese samples supplemented with 0, 1, 2 and 4% potato peel powder.
A, B, C: Means with the same letter among treatments are not significantly different (P ≤ 0.05).
a, b, c: Means with the same letter during storage period are not significantly different (P ≤ 0.05).

Total phenols content (TPC) and antioxidant activity (AOA).

The functional properties of processed cheese are affected by various factors, such as the type and properties of natural cheese, supplemental ingredients, emulsifying conditions, moisture, pH, fat content, cooling, and ripening [26]. The results in figure 1 showed the effect of adding PPP on the TPC and AOA values of processed cheese at 1 and 90 days of cold storage period. The results indicated that fresh control cheese had the lowest value of TPC, accounting for 8.68 mg GAE/g. TPC values (ranging from 12.56 to 28.86 mg GAE/g) significantly increased with the increased amount of PPP added to processed cheese. This probably be due to that PPs are described as being a rich source of phenolic compounds, which have been related to human health benefits [27]. In the same context, the content of phenolic compounds in PP is up to ten times higher than in potato flesh [2,28]. At the end of cold storage, TPC content significantly increased in all cheese samples including control to reach 10.05 - 38.12 mg GAE/g. This increase may be due to the lower moisture content in these cheeses. Additionally, the breakdown that occurs in the phenolic compounds during storage might increase the total phenolic content which could result in the conversion of polymeric polyphenols to monomeric ones. The increase in TPC values positively reflects in turn on increasing the antioxidant activity of the cheese samples. Consequently, a similar tendency has been obtained for AOA values where higher AOA values have been recorded by increasing the added amount of PPP and also with the progress of the storage period. In most studies, a

significant positive correlation was also found between the antioxidant activity and the phenolic content of PP extracts [2,29].

The data displayed in figure 2 showed the pH and acidity values of processed cheese samples during 90 days of cold storage. The data revealed that changes in pH and acidity values were time-dependent and composition-dependent. Generally, PPP incorporation led to lowering pH values. Thus, the lowest pH value (5.69) was recorded for the processed cheese sample with 4 % PPP (T3), compared with the highest value (5.88) which was recorded for the control cheese sample. This could be mainly due to the lower pH value (5.47) of PPP compared to 5.86 and 6.61 for Ras and soft cheese curd, respectively. pH values of all samples gradually decreased during the cold storage period for 90 days. The observed pH decline during storage time is mainly attributed to the breakdown of emulsifying salt and its interaction with proteins. The changes in pH values were almost insignificant. Several authors reported similar findings regarding pH changes in processed cheese during storage time [9,30], attributing these changes to a similar explanation. The opposite tendency has been obtained for acidity values where higher acidity values by increasing the added amount of PPP. Awad., *et al.* [24]. recorded a similar trend in acidity by adding lupin paste.

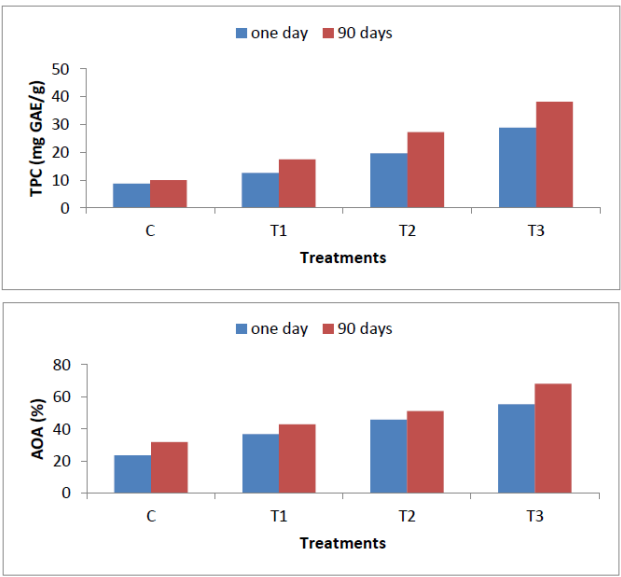


Figure 1: Antioxidant activity (AOA) and Total phenols content (TPC) of processed cheese containing different levels of potato peel powder when fresh and during storage at refrigerator ($5 \pm 1^{\circ}\text{C}$).

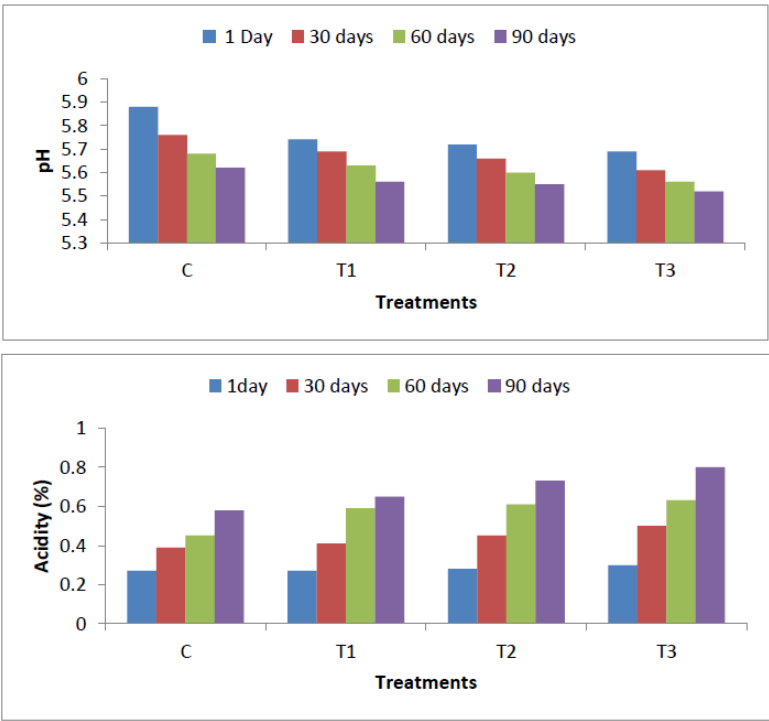


Figure 2: pH values and Acidity (%) of processed cheese containing different levels of potato peel powder when fresh and during storage at refrigerator ($5 \pm 1^{\circ}\text{C}$).

Meltability and oil separation

The effect of PPP as a new additive on the meltability of processed cheese is presented in table 4. The data indicated that the control cheese had the highest meltability value. The addition of PPP has decreased to a certain extent the meltability of resultant processed cheese. All treatments with PPP had significantly lower meltability values than the processed control. Accordingly, the control sample has the highest meltability value followed by the con-

taining (T_1). The lower meltability values in treatments with PPP could be due to the lower moisture content in these cheese samples (Table 3). The addition of PPP (a rich source of fiber) in treated cheese samples increased the water-holding capacity, which led to a lack of free water [31]. All samples exhibited an increase in meltability values (significant at $P \leq 0.05$) of processed cheese including control treatment after 3 months of storage at $5 \pm 2^{\circ}\text{C}$. The increase in meltability values of stored samples could be related to the hy-

drolysis and protein breakdown that occurred in the cheese matrix, which leads to high soluble nitrogen content and an increase of cheese flow in agreement with the findings reported by [32].

The changes in oil separation values of all treatments, whether fresh or stored, had a similar trend to that of meltability in agreement with that reported by [31].

Property	Storage time (days)	Treatments*			
		C	T ₁	T ₂	T ₃
Meltability (mm)	1	31.2 ^{Ai}	27.0 ^{Bj}	26.5 ^{Ck}	26.0 ^{Di}
	30	44.9 ^{Ad}	38.6 ^{Bf}	34.8 ^{Cg}	32.5 ^{Dh}
	60	51.0 ^{Ab}	45.3 ^{Bd}	41.7 ^{Ce}	38.0 ^{Dfg}
	90	55.8 ^{Aa}	50.0 ^{Bbc}	46.3 ^{Cc}	44.2 ^{Dde}
Oil separation (%)	1	46.5 ^{Aj}	44.5 ^{Bk}	38.3 ^{Cm}	33.7 ^{Dn}
	30	51.8 ^{Afg}	50.2 ^{Bh}	48.2 ^{Cl}	41.0 ^{Di}
	60	60.0 ^{Ac}	56.4 ^{Bd}	51.1 ^{Cfg}	49.8 ^{Di}
	90	65.1 ^{Aa}	63.3 ^{Bb}	55.7 ^{Ce}	52.3 ^{Df}

Table 4: Meltability (mm) and Oil separation (%) of processed cheese containing different levels of potato peel powder when fresh and during storage at refrigerator (5 ± 1°C).

A, B, C: Means with the same letter among treatments are not significantly different (P ≤ 0.05).

a, b, c: Means with the same letter during storage period are not significantly different (P ≤ 0.05).

Textural properties

Table 5 illustrated the texture parameters of processed cheese samples containing 0, 1, 2, and 4 % of PPP at 1, and 90 days of cold storage time. All texture parameters, except adhesiveness, increased with the increased amount of PPP. In this sense, adding 4% of PPP (T₃) led to the highest values of hardness, springiness, gumminess, cohesiveness, and chewiness, and the lowest value of adhesiveness, as compared to the control sample. Texture parameter values have been proportionally changed by adding PPP. Additionally, the progress of cold storage time led to an increase in all texture parameters except adhesiveness. Unlike the control sample, the processed cheese sample containing 4% PPP (T₃) at 90 days of storage, had the lowest value of adhesiveness (8.08) and the highest values of hardness (33.38 N), springiness (10.32mm), gumminess (10.3N), cohesiveness (0.79), and chewiness (120.54 N/mm).Generally, significant changes have been recorded (P < 0.05) in all texture parameters by incorporation of PPP, and progress of cold storage time. The changes that occurred in texture parameters could be due to the difference in formulation of each processed sample. In this context, casein represents the main protein in the control sample while PPP-containing samples had different concentrations of protein derived from potato peel powder along with the casein protein. Based on this, it is proposed that variation in texture parameters could mainly be attributed to the variation in the occurring protein types and concentrations present in processed cheese samples [33]. Similar findings of texture parameters have been reported by adding rice bran [34], and date seed powder [25] to processed cheese. This observation has been ascribed to the less water availability and reduction in moisture content dur-

ing storage time, and hence the increased viscosity in treatment samples [35]. Similarly, increased values of hardness have been obtained by [30,36] at the final storage time of processed cheese samples. Excepting the adhesiveness, an increment was observed in the values of springiness and cohesiveness, gumminess, and chewiness by increasing the added amount of PPP and the progress of cold storage time. Similar previously reported findings were observed by [24].

Sensory evaluation

Recently, Food products containing naturally occurring components that are beneficial to health, such as enzymes, antioxidants, probiotics and prebiotics, natural extracts, antimicrobials, and essential oils derived from plants, have demonstrated a preference among consumers [37]. Sensory evaluation is an important indicator of potential consumer preferences. Sensory evaluation of processed cheese with PPP is shown in table (6). From the obtained results, it is obvious that cheese control gained the highest score while the lowest score was gained by T₃ (4%PPP). Among treatments, there were no major changes in cheese flavor and texture. All treatment samples were sensory acceptable and the treatment containing 1% PPP was the most acceptable sample. Fresh-treated cheeses exhibited nearly both flavor and texture values but the color highly differed from one treatment to another. The addition of PPP into the blend led to a light brown color of resultant cheese and the light brown color became more obvious with increasing the added amount of PPP. Generally, the color of the final product is affected by the ingredients used in the manufacture of cheese. The data showed significant changes between the control sample and

Parameter	Storage period (days)	Treatments*			
		C	T ₁	T ₂	T ₃
Hardness (N)	1	24.39 ^{Df}	26.97 ^{Ce}	28.92 ^{Bc}	30.44 ^{Ab}
	90	27.39 ^{Dd}	29.05 ^{Cc}	30.09 ^{Bb}	33.38 ^{Aa}
Adhesiveness	1	21.02 ^{Aa}	15.10 ^{Bc}	14.16 ^{Cd}	12.12 ^{De}
	90	16.64 ^{Ab}	11.00 ^{Bf}	9.42 ^{Cg}	8.08 ^{Dh}
Springiness (mm)	1	9.47 ^{Ce}	9.65 ^{Bd}	9.88 ^{ABbc}	10.15 ^{Ab}
	90	9.78 ^{Cc}	9.84 ^{Bbc}	9.99 ^{Bb}	10.32 ^{Aa}
Cohesiveness (ratio)	1	0.42 ^{Df}	0.54 ^{Cd}	0.61 ^{Bc}	0.69 ^{Ab}
	90	0.50 ^{Ce}	0.60 ^{Bc}	0.68 ^{Bb}	0.79 ^{Aa}
Chewiness (N/mm)	1	91.76 ^{Dh}	96.55 ^{Cg}	107.07 ^{Bd}	116.43 ^{Ab}
	90	98.83 ^{Df}	105.54 ^{Ce}	111.43 ^{Bc}	120.54 ^{Aa}
Gumminess (N)	1	3.3 ^{Df}	4.2 ^{Ce}	6.5 ^{Bc}	8.8 ^{Ab}
	90	4.6 ^{Dd}	6.5 ^{Cc}	8.6 ^{Bb}	10.3 ^{Aa}

Table 5: Texture profile analysis (TPA) of processed cheese containing different levels of potato peel powder when fresh and during storage at refrigerator (5 ± 1°C).

A, B, C: Means with the same letter among treatments are not significantly different (P ≤ 0.05).
a, b, c: Means with the same letter during storage period are not significantly different (P ≤ 0.05).

Parameter	Storage period (days)	Treatments*			
		C	T ₁	T ₂	T ₃
Flavor (40)	1	39.50	38.00	37.28	35.48
	30	39.00	37.82	36.43	35.00
	60	38.00	36.65	35.75	34.76
	90	37.00	35.11	34.11	33.87
Texture (40)	1	38.50	37.50	36.00	35.33
	30	38.00	36.00	35.68	34.84
	60	37.00	35.50	34.52	34.21
	90	36.00	34.10	33.81	32.86
Color (20)	1	19.00	18.50	17.32	16.73
	30	19.00	18.35	17.00	16.34
	60	18.72	17.81	16.25	15.73
	90	17.50	17.00	15.81	15.29
Total acceptability (100)	1	97.00 ^{Aa}	94.00 ^{Bb}	90.60 ^{Cc}	87.54 ^{De}
	30	96.00 ^{Aab}	92.17 ^{Bbc}	89.11 ^{Cd}	86.18 ^{Df}
	60	93.72 ^{Ab}	89.96 ^{Bd}	86.52 ^{Cf}	84.70 ^{Dg}
	90	90.50 ^{Ac}	86.21 ^{Bf}	83.73 ^{Cg}	82.02 ^{Dh}

Table 6: Sensory properties of processed cheese containing different levels of potato peel powder when fresh and during storage at refrigerator (5 ± 1°C).

A, B, C: Means with the same letter among treatments are not significantly different (P ≤ 0.05).
a, b, c: Means with the same letter during storage period are not significantly different (P ≤ 0.05).

cheese supplemented with 4% of PPP. From the data shown in Table (6), the sensory quality of all samples gradually decreased during the storage period reaching the lowest score after 3 months. The decrease in the organoleptic properties during the storage period is attributed to the changes that occurred in the functional properties of cheese. These results are in line with the findings of [31].

Conclusion

This study investigated the effect of using potato peel powder (PPP) on the physicochemical, textural and organoleptic properties of processed cheese. The addition of PPP caused an increase in protein content, TPC and AOA values of processed cheese. Cheese control gained the highest score while the lowest score was gained by T₃ (4%PPP). During storage, the control and PPP 1% samples (T₁) showed higher acceptability values compared to all other treatments followed by the PPP 2% samples (T₂) then PPP 4% samples (T₃). Therefore, this study recommends the use of PPP as a low-cost nutritional and functional ingredient up to 2% in the preparation of processed cheese.

Bibliography

1. Wu ZG., *et al.* "Isolation, Identification and Quantification of Unsaturated Fatty Acids, Amides, Phenolic Compounds and Glycoalkaloids from Potato Peel". *Food Chemistry* 135 (2012): 2425-2429.
2. Albishi T., *et al.* "Phenolic Content and Antioxidant Activities of Selected Potato Varieties and Their Processing By-Products". *Journal of Functional Foods* 5 (2013): 590-600.
3. Friedman M., *et al.* "Potato Peels and Their Bioactive Glycoalkaloids and Phenolic Compounds Inhibit the Growth of Pathogenic Trichomonads". *Journal of Agricultural and Food Chemistry* 66 (2018): 7942-7947.
4. Sampaio S., *et al.* "Potato Peels as Sources of Functional Compounds for the Food Industry: A Review". *Trends in Food Science and Technology* 103 (2020): 118-129.
5. Hladká K., *et al.* "The Effect of Cheese Maturity on Selected Properties of Processed Cheese without Traditional Emulsifying Agents". *LWT - Food Science and Technology* 55 (2014): 650-656.
6. Guinee T. "Salting and the Role of the Salt in Cheese". *International Journal of Dairy Technology* 57 (2004): 99-109.
7. Hassan ZMR., *et al.* "Utilization of Soybean Flour and Flaxseed Flake in the Manufacture of Processed Cheese Spread". Proceedings of the 10th Science Dairy Conference Egyptian and Technology, November 19-21, The International Agriculture Centre, Cairo, Egypt (2007): 463-479.
8. Seleet FL., *et al.* "Production of Functional Spreadable Processed Cheese Analogue Supplemented with Chickpea". *International Journal of Dairy Science* 9.1 (2014): 1-14.
9. El-Sayed MI., *et al.* "Utilization of Maize Germ Cake as a Nutritional and Functional Ingredient in Processed Cheese". *Food and Environment Safety* 22.4 (2023): 255-267.
10. Salama WM., *et al.* "Enhancing the Nutritional Content of Processed Cheese with Wheat Germ". *Acta Scientific Nutritional Health* 7.10 (2023): 09-15.
11. Awad RA. "Studies on Emulsifying Salt Mixture for Processed Cheese. Ph.D. thesis, Ain Shams University, Faculty of Agriculture, Food Science Department (1996).
12. AOAC. "Official Methods of Analysis". *Association of Official Analytical Chemistry* (2017).
13. Karan GS and Ak MM. "Cheese Rheology and Texture. CRC Press LLC (2003).
14. Ghosh BC and Singh S. "Storage studies of Mozzarella cheese part I-sensory and rheological characteristics". *Indian Journal Dairy Science* 45 (1992): 199-202.
15. Bourne MC. "Food texture and viscosity". Concept and measurement (2nd edition). New York, NY: Academic Press.
16. Elfalleh W., *et al.* "Physico-Chemical Properties and DPPH-ABTS Scavenging Activity of Some Local Pomegranate (Punica granatum) Ecotypes". *International Journal of Food Science and Nutrition* 60 (2009): 197-210.
17. Okonogi S., *et al.* "Comparison of Antioxidant Capacities and Cytotoxicities of Certain Fruit Peels". *Food Chemistry* 103 (2007): 839-846.
18. Meyer A. "Processed Cheese Manufacture. 1st edition., Food Trade Press Ltd (1973).
19. SAS. "Statistical Analysis System". SAS User's Guide: Statistics/STAT Ver. 9.2. SAS Institute Inc (2008).
20. Helal MM., *et al.* "Evaluation of Potato Peel Extract as a Source of Antioxidant and Antimicrobial Substances". *Menoufia Journal of Food and Dairy Sciences* 5 (2020): 79-90.
21. Liang S., *et al.* "Lactic Acid Production with Undefined Mixed Culture Fermentation of Potato Peels Waste". *Waste Management* 34 (2014): 2022-2027.
22. Badr SA and El-Waseif MA. "Effect of Dietary Fiber in Potato Peels Powder Addition as Fat Replacer on Quality Characteristics and Energy Value of Beef Meatballs". *Journal of Biological Chemistry and Environmental Science* 13 (2018): 145-160.

23. Zhu X., *et al.* "Effect of Alkaline and High-Pressure Homogenization on the Extraction of Phenolic Acids from Potato Peels". *Innovative Food Science and Emerging Technologies* 37 (2016): 91-97.
24. Awad RA., *et al.* "Effect of Lupine as Cheese Base Substitution on Technological and Nutritional Properties of Processed Cheese Analogue". *Acta Scientiarum Polonorum Technologia Alimentaria* 13 (2014): 55-64.
25. Darwish AA., *et al.* "Texture, Sensory Attributes and Antioxidant Activity of Spreadable Processed Cheese with Adding Date Seed Powder". *Journal of Food and Dairy Sciences* 11 (2020): 377-383.
26. Fu. w, Nakamura, T. "Effects of Mechanical Properties on Starches Microstructure of Processed Cheeses with Different Casein Network Types". *Food Hydrocolloids* 79 (2018): 587-595.
27. Silva-Beltrán NP, *et al.* "Phenolic Compounds of Potato Peel Extracts: Their Antioxidant Activity and Protection Against Human Enteric Viruses". *Journal of Microbiology and Biotechnology* 27 (2017): 234-241.
28. Rytel E., *et al.* "Content of Polyphenols in Coloured and Yellow Fleshed Potatoes During Dicing Processing". *Food Chemistry* 161 (2014): 224-229.
29. Singh A., *et al.* "Microwave-Assisted Extraction of Phenolic Antioxidants from Potato Peels". *Molecules* 16.3 (2011).
30. Shamsia SM and El-Ghannam M. "Production and Evaluation of Processed Cheese Analogue Using Ricotta Cheese Prepared from Sweet Whey". *Alexandrian Journal of Science and Technology* 14 (2017): 1-11.
31. Awad RA and Wafaa M Salama. "Development of a Novel Processed Cheese Product Containing Fermented Barley". *Egyptian Journal of Dairy Science* 38 (2010): 95-103.
32. Awad RA. "Impact of Potato Puree as a Cheese Base Replacement in the Manufacture of Processed Cheese". *Egyptian Journal of Dairy Science* 2 (2003): 375-387.
33. Fox PF, *et al.* "Cheese Rheology and Texture. In Fundamentals of Cheese Science". *Aspen Publishers* (2000): 305-333.
34. El-Shibiny S., *et al.* "Preparation, Composition and Microbiological and Rheological Properties of Functional Processed Cheese Supplemented with Rice Bran". *Journal of Applied Sciences Research* 9 (2013): 4927-4934.
35. Montesinos-Herrero C., *et al.* "Partial Replacement of Fat by Functional Fiber in Imitation Cheese: Effects on Rheology and Microstructure". *International Dairy Journal* 24 (2006): 910-919.
36. Awad SA., *et al.* "Ripened Curd Cheese Slurries in the Manufacture of Processed Cheese". *Alexandrian Journal of Food Science Technology* 3 (2006): 43.
37. Lee SK., *et al.* "Effect of Fat and Protein-in-Water Concentrations on the Properties of Model Processed Cheese". *International Dairy Journal* 50 (2015): 15-23.