

A Rare Case of Adult-Onset Focal Epileptic Spasms Due to Frontal Astrocytoma

Ravish R Keni*, Sreekanta Swamy, M Sowmya, Dhananjaya I Bhat, Ravindra B Kamble, Vivek Rayadurg, M Manjunath

Department of Neurosciences, Aster RV Hospital, Bengaluru, India

*Corresponding Author: Ravish R Keni, Department of Neurosciences, Aster RV Hospital, Bengaluru, India.

Received: June 15, 2022

Published: July 06, 2022

© All rights are reserved by Ravish R Keni, et al.

Abstract

Epileptic spasms (ES) usually present between two weeks and eighteen months of age. The occurrence of ES in adults is rare and usually comprises of patients in whom the seizures started during infancy and persisted into adulthood. We report a rare case onset focal ES as the isolated seizure type in a 30-year-old adult due to frontal astrocytoma. We highlight the electroclinical differences between ES in adults versus infants; and review the factors determining the age of onset of ES.

Keywords: Epileptic Spasms; Focal; Adult-Onset

Introduction

Epileptic spasms (ES) are seizures characterised by brief involuntary muscular contractions, with majority of cases presenting between two weeks and eighteen months of age [1]. They are the prototype seizures in West syndrome which is a triad of IS, hypsarrhythmia in EEG and developmental regression [1]. They can also be seen in other early-onset epileptic encephalopathies such as Ohtahara syndrome and less frequently in elder children with Lennox-Gastaut syndrome [1]. ES may not always indicate generalized epilepsy [2], since they can rarely be the only seizure type in surgically remediable focal and hemispheric epilepsies [3,4] or be associated with other types of focal seizures [5,6].

The occurrence of ES in adults is rare. In previous case reports on ES in adults, the seizures started infancy and persisted into adulthood [7,8]. These patients had ES occurring along with other seizure types. To our knowledge, we report the first case of new onset focal ES as the isolated seizure type in a 30-year-old adult patient. We discuss the electroclinical differences between ES in adults versus infants; and review the factors determining the age of onset of ES. 2.

Case Study

A 30-year-old male, with normal birth and developmental history, presented with recent onset seizures from 1 week. The semi-

ology comprised of intermittent clusters of clonic jerks involving the right hand with retained awareness. He underwent Video EEG for syndromic diagnosis. Multiple seizures characterised by jerking of fingers of right hand, lasting for 270- 300 msec were recorded (Supplementary Video 1). The ictal EEG showed diffuse (predominant left frontal) burst of slow waves measuring 60-80 microvolts followed by electrodecrement suggestive of epileptic spasms (Figure 1). The inter-ictal EEG showed well-formed background intermixed with focal intermittent slowing over the left frontotemporal region (Figure 2).



Video: Ictal video showing brief repetitive focal clonic jerks involving the fingers of right hand lasting for 270-300msecs each.

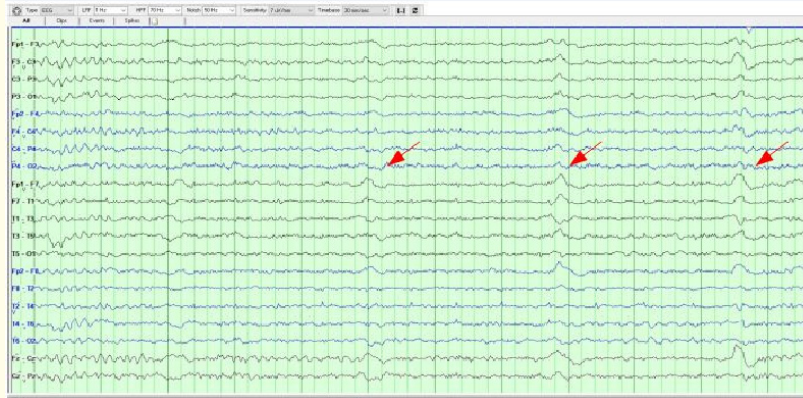


Figure 1: Ictal EEG showing diffuse (predominant left frontal) burst of slow waves (red arrow) measuring 60-80 microvolts followed by electrodecrement.

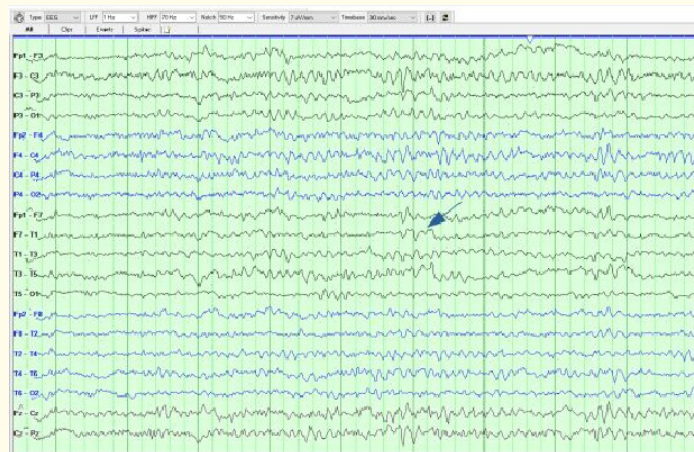


Figure 2: Interictal EEG showing well-formed background intermixed with focal slowing over the left frontotemporal region (blue arrow).

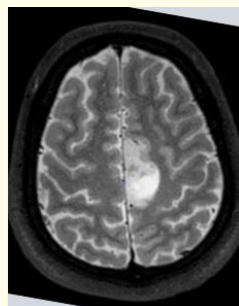


Figure 3: MRI brain showing well-defined irregular T2 hyperintense lesion seen in the left parafalcine frontal lobe measuring approximately 36 x 53 x 20 mm.

His MRI main showed well-defined irregular T2 hyperintense lesion seen in the left parafalcine frontal lobe (Figure 3). He underwent stereotactic biopsy and histopathology showed anaplastic astrocytoma (WHO Grade-III). He was started on Valproate and Zonisamide after which the seizures were well controlled and received chemoradiotherapy for astrocytoma.

Discussion

Maturation changes in the brain with ageing brings about a change in seizure semiology and electrophysiology. The prototype ES in infants are characterised clinically by brief jerking spells of flexion, extension, or combination of flexion-extension of the head, neck, arms, legs, and trunk lasting for two seconds or less and electrophysiologically, have a variety of ictal patterns such as: generalized slow wave, attenuation and increased fast activity occurring alone or in any sequential combination preserving the above order [1].

ES in adults as seen in our case and previous reports, are of shorter duration < 1 second, and of milder intensity compared to infants, although they may also occur in clusters [7,8]. Electrophysiologically, in adult-onset ES, the interictal hypsarrhythmic pattern is replaced by focal abnormalities which may be slowing as seen in our case or focal spikes in previous cases [7,8]. The ictal pattern shows small amplitude slow waves when compared against high amplitude waveforms in infantile-onset spasms [7,8].

The age of onset of ES has been found to depend on three factors in previous studies: i) lesion volume: age of onset being significantly earlier in the hemispheric pathologies than focal lesions [9], ii) type of the lesion: seizures have been found to occur earlier in tuberous sclerosis > cortical dysplasia > glioneural tumors [9], iii) cortical maturation gradient: relative excess of excitative over inhibitive synapses in the cortical network begins early in the posterior parts of the cortex, followed by involvement of the anterior parts later in age [10-12], the variations of activity with age [11]. 4.

Conclusion

The rare occurrence of focal ES in the third decade of life in our case can be plausibly attributable to the three mechanisms discussed above viz. lesion being focal, glioneural tumor and located anteriorly. Our case highlights the importance of video-EEG as a useful tool in the diagnosis in adult-onset ES and many of these patients are potential candidates for epilepsy surgery, particularly when MRI shows unilateral focal abnormality.

Funding Sources

There are no funding sources to declare.

Ethical Compliance Statement

The authors confirm that ethical clearance was obtained from institutional review board. We also confirm that we have read the Journal's position on issues involved in ethical publication and affirm that this work is consistent with those guidelines. We confirm that all the clinical information including videos of the patient were published after taking informed consent of the patient.

Declaration of Competing Interest

The authors report no declarations of interest.

Acknowledgements

We thank the patient and his family, and our neurotechnologists Mr. Prashanth and Mr. Muhammed.

Bibliography

1. Holmes G and Vigeveno F. "Infantile spasms. In: Engel J, Pedley T, editors. *Epilepsy: A Comprehensive Textbook*". New York: Lippincott-Raven (1997).
2. Berg A., *et al.* "Revised terminology and concepts for organization of seizures and epilepsies: report of the ILAE commission on classification and terminology, 2005-2009". *Epilepsia* 51 (2010): 676-685.
3. Yum M-S., *et al.* "Surgical treatment for localization related infantile spasms: excellent long-term outcomes". *Clinical Neurology and Neurosurgery* 113 (2011): 213-217.
4. Pellock J., *et al.* "Infantile spasms: AUS consensus report". *Epilepsia* 51 (2010): 2175-2189.
5. Kubota T., *et al.* "Epileptic spasms preceded by partial seizures with a close temporal association". *Epilepsia* 40 (1999): 1572-1579.
6. Pachatz C., *et al.* "Epileptic spasms and partial seizures as a single ictal event". *Epilepsia* 44 (2003): 693-700.
7. Cerullo A., *et al.* "Clinical and videopolygraphic features of epileptic spasms in adults with cortical migration disorder". *Epileptic Disorders* 1.1 (1999): 27-33.

8. d'Orsi G., *et al.* "Adult epileptic spasms: a clinical and video-polygraphic study". *Epileptic Disorders* 9.3 (2007): 276-283.
9. Chipaux M., *et al.* "Refractory spasms of focal onset-A potentially curable disease that should lead to rapid surgical evaluation". *Seizure* 51 (2017): 163-170.
10. Luhmann HJ., *et al.* "Spontaneous neuronal activity in developing neocortical networks: from single cells to large-Scale interactions". *Frontiers in Neural Circuits* 10 (2016): 40.
11. Chiron C., *et al.* "Changes in regional cerebral blood flow during brain maturation in children and adolescents". *Journal of Nuclear Medicine* 33 (1992): 696-703.
12. Huttenlocher PR., *et al.* "Synaptic development in human cerebral cortex". *International Journal of Neurology* 16-17 (1983): 144-154.

1. Foltynie T., *et al.* "The cognitive ability of an incident cohort of Parkinson's disease patients in the UK, The CamPaIGN study". *Brain* 127 (2004): 1-11.
2. Richard IH., *et al.* "Anxiety and Parkinson's disease". *Journal of Neuropsychiatry and Clinical Neurosciences* 8 (1996): 383-392.
3. Walsh K and Bennett G. "Parkinson's disease and Anxiety". *Postgraduate Medical Journal* 77 (2001): 89-93.
4. Nissenbaum H., *et al.* "Mood swings associated with the 'on-off' phenomenon in Parkinson's disease, A register based study". *Acta Psychiatrica Scandinavica* 17 (1987): 899-904.
5. Witjas T., *et al.* "Non-motor fluctuations in Parkinson's disease: Frequent and disabling". *Neurology* 59 (2002): 408-413.
6. Braak H., *et al.* "Idiopathic Parkinson's Disease: possible routes by which vulnerable neuronal types may be subject to neuro-invasion by an unknown pathogen". *Journal of Neural Transmission* 110 (2003): 517-536.
7. Berendse HW and Groenewegen HJ. "Organization of the thalamostriatal projections in the rat, with a special emphasis on the ventral striatum". *The Journal of Comparative Neurology* 299 (1990): 187-228.
8. Singer C., *et al.* "Sexual functions in patients with Parkinson's disease". *Journal of Neurology, Neurosurgery, and Psychiatry* 54.10 (1990): 942.
9. Visser M., *et al.* "Assessment of autonomic dysfunction in Parkinson's disease: The SCOPA- AUT". *Movement Disorder* 19.11 (2004): 1306-1312.
10. Susan Spear Basset. "Cognitive impairment in Parkinson's disease". *Primary Psychiatry* 12 (2005): 50-55.
11. Sullivan EV., *et al.* "Different cognitive profiles on standard behavioural tests in Parkinson's disease and Alzheimer's disease". *Journal of Clinical and Experimental Neuropsychology* 11.6 (1989): 94-109.
12. Goldman WP., *et al.* "Cognitive and motor functioning in Parkinson's disease: subjects with or without questionable dementia". *Archives of Neurology* 55 (1998): 674-80.
13. Gross RG., *et al.* "Cognitive impairment in Parkinson's disease and Dementia with Lewy Bodies: A spectrum of disease". *Neurosignals* 16 (2008): 24-34.
14. Aarsland D., *et al.* "Prevalence and characteristics of dementia in Parkinson's disease: an 8 year prospective study". *Archives of Neurology* 60.3 (2003): 387-392.
15. Marinus J., *et al.* "Assessment of cognition in Parkinson's disease". *Neurology* 61 (2003): 1222-1228.
16. Tandberg E., *et al.* "The occurrence of depression in Parkinson's disease: a community based study". *Archives of Neurology* 53 (1996): 175-179.